



ISSAQUAH HIGHLANDS Connections

August 2003

Community Association Contact Information

Association Executive Director

Vicki Stier
vstier@portblakely.com

Association Administrative Assistant

Mary Birren
mbirren@portblakely.com

Community Information Coordinator

Oscar Kelley
okelley@portblakely.com

Association Events Coordinator

Sondi Lind
slind@portblakely.com

Association Accountant

Jocelyn Johnson
jjohnson@portblakely.com
(206) 225-2316

Avalon Wynhaven Property Manager

Lonnie Fein
(425) 392-7800

Street Address

1401 Park Drive N.E.

Mailing Address

1775 12th Avenue NW, Ste. 101
Issaquah, Washington 98027

Phone

(425) 427-8736

Fax

(425) 427-8050

Association Office Hours

Monday - Friday
8:30 A.M. to 5:00 P.M.

Community Center Marketing Hours

Monday - Friday
12:00 P.M. to 5:00 P.M.
Saturday - Sunday
11:00 A.M. to 6:00 P.M.

Central Park at Issaquah Highlands

Issaquah Highlands residents can look forward to a series of articles regarding the City of Issaquah Parks and the mini parks throughout the community. You will learn about what makes these parks in your backyard so special and anticipated features unique to each.

The parks are one of the reasons Issaquah Highlands residents have chosen Issaquah as their home to make it a remarkable place to live, work and play. The parks encourage the pedestrian-friendly plan of our community that entices people to get out in the neighborhoods as you are never more than a ¼ mile walk from a neighborhood, future school site, or community park. You only needed to be at Ashland Park on July 4th in celebration with your neighbors to know how much the parks mean to people getting together.



ketball court and playground for older children on city-owned property. The Issaquah Highlands Community Association maintains, manages and regulates use of the facilities.

Port Blakely also agreed to a number of other tasks to include rough grading using the existing topsoil located in Central Park/School Site west of the BPA for a multipurpose playfield and complete earthwork which was done ahead of schedule. The City committed to building the park after PBC completed the work. At their July 2003 meeting, Issaquah City Council accepted a bid from a contractor to proceed with Phase I of the four phases of the Central Park development. There was a lot of pride and excitement at the meeting to see the construction commence for Central Park.

The total planned facilities for **Central Park**, the city's largest park include:

- 3 play areas
- 1.5 basketball or sport courts
- trailhead park with restrooms and parking
- 3 picnic areas

- 4 softball/baseball fields
- 3 full-sized soccer fields
- 7 mod soccer fields
- 1-5 acre passive area to include a picnic area and play lot. The 5 acres and facilities identified may be consolidated or distributed throughout the Central Park area.
- 4 tennis courts



The City committed to provide \$2.5 million (1996 dollars adjusted up annually and currently at \$3.3 million) in improvements and Port Blakely committed to provide improvements to assist the City in providing recreational facilities throughout the community.

PBC, at its cost, designed and installed to City approved standards, the **Firehouse Park** to include a bas-

In March 2003, the Parks Department submitted their Site Development Permit for Central Park to construct ball fields, tot lots, picnic facilities, trails, and potentially BMX

see PARKS on page 2

and skateboard facilities and an aquatic center on this 50-acre site. The project will also include roads, parking, landscaping, recreation and utilities. In April, the Urban Village Development Commission approved the plans, with an additional requirement of a minimum of two quiet sitting locations in each pad to provide for the passive park user, and that the location of the sitting locations capitalize on nice views, where possible.

There are four phases of development for Central Park. Per the Parks Department June 2003 budget, Phase I will commence in the summer 2003 with the estimated completion for spring 2004. Phase I will have a restroom, picnic shelter, play area, baseball field, kids basketball court, tables, benches, barbecues, drinking fountain, irrigation system, and landscaping.

Phase II is scheduled for development in spring 2004 and will include a play area, drinking fountain, fencing and irrigation. Furnishing items such as tables, benches, bike rack and a kiosk are not funded. Phase III is scheduled for spring 2005. Phase IV is currently unfunded.

There is full funding budgeted for North Park anticipated for Spring 2006 and Neighborhood Park 2 (across the street from Central Park – north of Park Drive). The Parks Department has scheduled the Neighborhood Park 2 development for 2007.

The budget allocation for the Parks is presently as follows:

Central Park	\$2,331,000
North Park	\$ 515,000
Neighborhood Park 2	\$ 485,000
Preliminary Cost Estimate	\$3,331,000
	<i>(Development Funds available as of 4-25-03)</i>



The Issaquah Highlands Parks & Trails Committee attends meetings and provides appropriate input on park development and enhancements for the benefit of our neighborhoods and the residents of Issaquah.

So let's go have fun in the park with our families and friends!

Construction Updates

Roads paving and clearing activity:

Road work continues on Park Drive up to the BPA, 24th and 25th north of Park Drive, Central South, Division 90, Division 34, 30th Ave. NE, Summit Park & Overlook Landscape, and 28th Ave. NE.

Grading:

Port Blakely has been grading numerous divisions in the North Park area located east of the BPA. Port Blakely has been grading on Pad 2 in Central Park.

Sunset Interchange:

The contractor lost 7 working days due to the strike by the Carpenters Union. The project is now scheduled for completion on August 29th, 2003. The Front Street east bound on-ramp will be shut down from August 1st from 8:00 P.M. until August 4th at 4:00 P.M. The E. Sunset Way ramps, (both east bound on ramp and the west bound off ramp) will be closed from August 8th until August 29th for the connection to the new bridges. The Grand Opening ceremony is scheduled to be held on August 29th at 10:00 a.m. with the interchange being opened before the evening commute.

Interim Park-and-Ride:

Sound Transit plans to establish an interim Park-and-Ride facility in Issaquah Highlands. Through discussions with Port Blakely Communities, they have agreed to construct a 111-stall interim park-and-ride lot, available for September ridership. Service will include the extension of Sound Transit's existing #554 line. The lot will be located immediately south of the permanent park-and-ride location, abutting the southbound SPAR (9th Avenue NE). Anticipated opening date is August 29th.

Temporary Retail:

Plans are being made for temporary retail to be located along Highlands Drive near the interim Park-and-Ride lot. Starbucks and Bank of America are working with Port Blakely to provide services.

AUGUST COMMUNITY MEETINGS

Aquatic Center Task Force

Monday, August 4, 6:30-8:00 P.M.

Issaquah City Council

Monday, August 4, 7:30-9:00 P.M.

South Chambers, 135 E. Sunset Way

City of Issaquah Major Development & Regional Affairs Committee

Monday, August 11, 5:30-7:00 P.M.

City Hall/Police Facility, 130 E. Sunset

Issaquah Arts Commission

Monday, August 11, 6:00-7:30 P.M.

City Hall/Police Facility, 130 E. Sunset

Parks and Trails Committee

Tuesday, August 12, 6:30-8:00 P.M.

Technology Task Force

Wednesday, August 13, 7:00-8:30 P.M.

CDC Summer Workshop

Monday, August 18, 11:00 A.M.-1:00 P.M.

Pets 'n' Pals Committee

Monday, August 18, 6:30-8:00 P.M.

Issaquah City Council

Monday, August 18, 7:30-9:00 P.M.

South Chambers, 135 E. Sunset Way

Services Committee

Wednesday, August 20, 5:00-6:30 P.M.

City Hall/Police Facility, 130 E. Sunset

IH Board of Directors

Thursday, August 21, 5:30-6:30 P.M.

City of Issaquah Parks Board

Monday, August 25, 7:00-9:00 P.M.

South Chambers, 135 E. Sunset Way

Communication Committee

Wednesday, August 27, 6:30-8:00 P.M.

Cottages Board of Directors

Thursday, August 28, 6:30-7:30 P.M.

Meetings are held at the Community Center on Park Drive unless otherwise noted. All meetings are open. You are welcome to join us!



SchoolWise



Twice a year, Issaquah Highlands residents join forces to take a census of our children. The purpose of the census is to provide the Issaquah School District with up-to-date information about our population and growth so our neighborhood elementary school can be built as soon as possible. Below is the latest report to the district.

June 2003 Issaquah Highlands Report to the Issaquah School District on Children Census, Residential Buildout Projections and Demographic Trends

Once again, results of our study show consistent and significant trends with regard to the growth of the number of young families and children living in Issaquah Highlands.

Since our last report, dated October 26, 2002, we have added 50 children to the age groups in our study.

	May 2002	October 2002	June 2003
AGES 0-17	107	250	300
AGES 0-10 (Pre-School/Elementary)	81	115	156*
Fastest Growing Age Group AGES 0-4	N/A	69	104

* If we were able to obtain age breakouts from Avalon Wynhaven (333 rental units), indications are that 75% of their 114 total children would add 85 children to our records of children in the 0-10 age group.

• Small homes with sale prices and designs (3-4 bedrooms) that appeal to young families (such as those built by Lozier and Stafford Homes) are the fastest selling homes and have the highest ratios of children in the 0-10 age group.

Note: Our children populations and, interestingly enough, ages remain relatively stable in our established neighborhoods. The greatest growth, of course, comes as new homes and neighborhoods come on line.

In addition to new homes being built and sold in Phase II — finishing up Phase I, there are 15 new homes in Ravenna and 65 condo units in Sorrento that will come on line this summer.

Since the publication of this report, we have received current updates from the sales associates of the new homes in Phase II that report an additional total of 34 children to our community. Twenty-eight of them are in our key age group (0-10).

SPECIAL THANKS to our volunteer resident census takers and Association staff for all their hours of work to collect and publish this information: Lacey Leigh, Renee Zimmerman, R J Pihl, Amy Kertez, Lin Bogobowicz, Michelle Loesby, Denise Jarvis, Vanesa Cusimano, Rose Millican, Corbie Brumbelow, Darren Sekiguchi, Ursula Walker, Gina Oliver, Sarah Lee, Holly Raissipour, Sondi Lind, Barbara Kelly, Oscar Kelley and Tim Diller.

VERY SPECIAL THANKS to Faris Taylor for spear-heading this effort, compiling the numbers, writing the report, and presenting it to the school district.

Please see pages 6-7 for more census and school information.



CALENDAR OF EVENTS



Investment Club

Saturday, August 2nd and Saturday, August 16th 8:00 A.M.
Community Center

*RSVP to Scott Harrison at 425-427-5500
or harrison@fiberavenue.com.*

All Issaquah Highlands' neighbors are invited! On the first and third Saturday each month, the Investment Club will meet over coffee and doughnuts to discuss investing in stocks, bonds and mutual funds. The objective is to learn about investing wisely, to benefit from the knowledge and experience of others, to meet new friends and neighbors, and perhaps to make a few bucks as well!

Concert in the Park—Johnny Lewis Trio

Sunday, August 3rd 2:00 - 5:00 P.M.

Come on down to Ashland Park with your picnic baskets and dancing shoes to enjoy another hot summer concert. Today we will feature the *Johnny Lewis Trio*—a jazzy combination of wit, humor and great music that will surely jazz up your weekend! There will be a special appearance by "Dance All Night," who will be teaching us a few dance steps. They will also give us a taste of their dance lessons that will be starting August 6th right here in Issaquah Highlands!

Bunko Night for Women

Monday, August 4th 7:00 P.M.

RSVP to Holly at 425-369-9133 or holly@raissi.com.

It's time to roll the dice! Bunko is a social dice game played in multiples of 4 and at least 12 participants. This is a great opportunity to get out for a social evening with other women in your community. There are a few seats left. Please contact Holly and plan on giving Bunko a try—it's great fun!

Spiritual Discussion/Bible Discovery Group

Monday, August 4th and August 18th 6:30 - 8:00 P.M.

Avalon Wynhaven's Clubhouse

For more information please contact:

Barry Odom at barry@eastsidemosaic.com or 425-557-0087

Is faith relevant anymore? Come to a place for discussion and new friendships.

Together, we'll explore what the Bible might say about real life issues like parenting, marriage, relationships, facing our fears, the marketplace and the future. The group can also deal with tough questions like, why does evil exist? How do we know God is real? Refreshments provided. No childcare available.

Children's Play Time Group (previously Children's Story Time)

Every Tuesday at 12:00 noon

Meet in the Gazebo next to Sweet Addition

Kids! This is your time to gather with your friends and get out some of that summertime energy. You will be playing games, playing in the park, listening to stories or doing some of the other fun summer activities! You will have the opportunity to meet other kids in the community. Moms and dads, this is your time to relax and get to know some of the other parents in your community. Please bring a sack lunch if you would like.

Basketball Fun at Firehouse Park

Every Wednesday evening at 6:30 P.M.

Come join your friends and neighbors for a casual game of hoops at our neighborhood basketball court. Depending on the turnout we can play one-on-one or form teams! This is a great way to meet new people in your community, as well as a fun way to spend a warm summer evening!

Craft Night—Scrapbooking

Wednesday, August 6th 6:30 - 8:30 P.M.

Community Center

Cost is \$3.00 per person. Please RSVP by Tuesday, August 5th

Creative memory consultant, Karmell, will be teaching us how to organize our photos and preserve the past to enhance the future! If you are a beginner or have been creating your memories for years, you will enjoy this evening with your neighbors. Bring your favorite photos and any scrapbooking tools you may have. There will be supplies available to use as well as purchase. Limited space available. Refreshments will be served.



RSVP today!
(206) 701-0344

The Issaquah Highlands Community Association would like to make sure all residents can participate in any event hosted for the enjoyment of the community. Frequently there is a fee or donation charge to help offset the costs of the event. If you are in need of financial assistance or a discount, please contact Sondi at the Community Center at 206-701-0344 and confidential arrangements will gladly be accommodated.

Dance Lessons—West Coast Swing

Wednesday evenings starting August 6th

Construction Trailer Parking Lot

Please RSVP to Bill at "Dance All Night" 425-831-6760

Follow in the footsteps of the roaring 20's and the Jitterbug. Easy to learn moves that will impress everyone that sees them! Have fun with your partner or come alone and meet a new one. These are beginner classes so come out and learn a new step or two.

For more information on "Dance All Night" visit www.danceallnight.net

Mommy and Me Playgroup—August Field Trips

Thursdays in August 10:30 a.m.

Location will vary

It's time to take the troops and head out on four different field trips for this month's playgroup, including the Pacific Science Center, Greenlake, and other fun locations. For more information, please RSVP to Leslie Warrick at jimandlesie@fibercruiser.com or 425-427-1709. Don't forget the sunscreen!

The History of Issaquah

Presented by Erica Maniez,

Director of the Issaquah Historical Society

Thursday, August 7th 7:00 - 8:00 P.M.

Community Center

RSVP by Tuesday, August 5th

Get to know your community! Erica Maniez, Director of the Issaquah Historical Society, will give an overview on the history of Issaquah, including its founding in the 1860s, the mining boom of the early 1900s, and the dairy industry of the early century. Do you know what Issaquah's first community celebration was? Do you know what "Issaquah" means? Do you know the gender of the historic Issaquah ginkgo tree? Answers to these and other history mysteries will be revealed. We'll also be sharing old photographs, and information about Issaquah's historic sites. Erica S. Maniez, Museum Director, Issaquah Historical Society 425-392-3500, info@issaquahhistory.org

Homemade Gourmet Cooking Class

Tuesday, August 19th 6:30 - 8:30 P.M.

Community Center

\$5.00 donation per person, please RSVP by Sunday August 17th

Homemade Gourmet's mission is to "bring families back to the dinner table." Come explore ways to prepare your meals with fresh and flavorful meal options as well as sharing time with your family. We will be preparing a complete meal that will be complimented by wine samples from Trader Joe's. Homemade Gourmet will also have prepared products available for you to purchase.

An Evening With Washington Wine

Saturday, August 23rd 7:30 P.M.

Community Center

Cost is \$50.00 per person, please RSVP by Wednesday, July 9th

Attention all wine lovers! Don't miss this rare opportunity to taste Washington's premier boutique wines. Come and join this group tasting and learn about Washington's wine history, tasting technique, how wine is made, and why you should drink wine. It is uncommon to have all the best wines showcased in one tasting, and this will be a unique opportunity to try wines that are not readily available in stores. Come and join us for a fun evening with like-minded lovers of good wine. Reserve early, only 14 seats available!!

Last BBQ of the Summer

for Mommy & Me Families

Saturday, August 23rd 5:30 - 8:00 P.M.

Firehouse Park

RSVP to Renee Zimmerman at 425-369-2919

or zimmerman@isomedia.com by August 20th

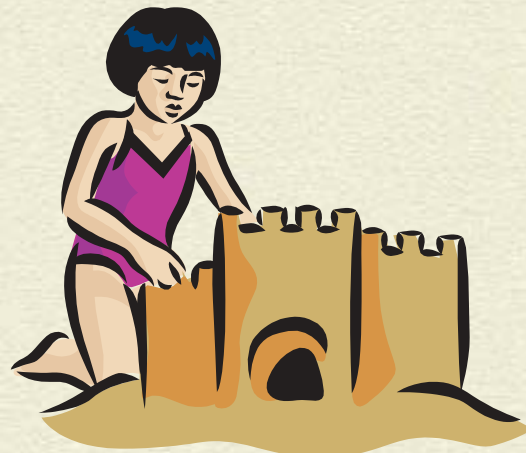
This is your last chance to meet the whole family! The Mommy & Me group announces a family BBQ to meet your neighbors and your neighbors' children. Event is by RSVP only. Please bring your own BBQ food and one side dish, salad, or dessert to share. (Please specify when RSVP-ing).

Mommy & Me Babysitting Referral Service

Need a neighborhood babysitter? Have no fear!

Contact Leslie Warrick, Mommy & Me Babysitter Referral Coordinator, at 425-427-1709 or at jimandlesie@fibercruiser.com.

Want more information about the Mommy & Me Group? Please contact Renee Zimmerman at zimmerman@isomedia.com or 425-369-2919.



In the works...

Atheism Discussion Group

For more information please contact Matt at matt727223@yahoo.com or 425-703-4844

Get together with neighbors to discuss atheism, the benefits of separation of church and state, and other related issues. We can also tackle interesting issues such as how it's possible to be moral without religion or a belief in gods, heaven, or hell.

Highlands Wine Tasting Social Club

Entering into the world of wine alone can be an intimidating and expensive experience with the extensive varieties. Whether you're a wine connoisseur looking to share favorites and expand your palate, or a novice wondering where to start, come and join us for this fun and informal social wine sharing. Each person will be expected to bring one bottle of reasonable quality (but affordable) wine; either your favorite or something you're curious to try. Bread and snacks will be provided to clear your palate between glasses. Please visit <http://groups.msn.com/HighlandsWineTasting/> for more info and recommendations, or email Jason Farnsworth (zerojason@hotmail.com) with questions.

**AWB Honors
Port Blakely Tree Farms
for Environmental Excellence**



Port Blakely Tree Farms has won the Association of Washington Business's (AWB) Environmental Excellence Award for its land and wildlife conservation.

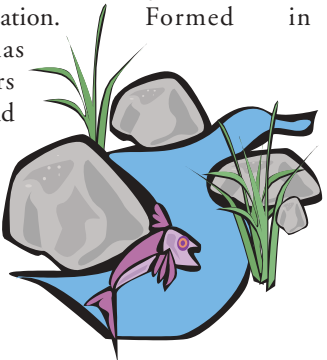
AWB honored thirteen businesses for their contributions in environmental innovation, environmental education, land and wildlife conservation, resource conservation, environmental cleanup, air quality, energy conservation and creating livable communities.

Port Blakely Tree Farms was recognized for road improvements to reduce sedimentation and remove all fish passage barriers. The road improvements have made available over 88 miles of habitat to which fish did not previously have access.

The company was honored for developing a state-mandated road maintenance and abandonment plan four years ahead of deadline. In addition, Port Blakely has completed 71 percent of the fish passage work to date.

"The Environmental Excellence Award winners have set the standard for environmental responsibility in Washington state," AWB President Don Brunell said. "These corporate citizens prove that economic development and environmental protection can go hand in hand."

The Association of Washington Business (AWB) is Washington's oldest and largest statewide business organization. Formed in 1904, AWB has 3,700 members across the state and is Washington state's chamber of commerce. More than three-quarters of AWB members are small businesses.



Community Center Services

Call 427-8736 or stop by for more information.

- ★ Discount Movie Tickets to Any Regal Cinema
- ★ Notary Public Services - Oscar Kelley, Notary
- ★ Limited Postage Stamp Purchase
- ★ Fax Sending and Receiving
- ★ Dry Cleaning Pick-Up/Delivery
- ★ Limited Photocopying - 10 cents a sheet
- ★ Issaquah Press Newspaper Stand
- ★ Block Party Wagon

**Issaquah Highlands Children's Census
Updated June 2003**

Single Family Homes, completed and sold by June 2003

Div.	Neighborhood	Ages of Children				Total	ratio of children to homes
		0-4	5-10	11-13	14-17		
14	Buchan: (38 homes)	14	4	1	0	19	50%
4	Lozier by the Ponds: (34 homes)	11	9	1	2	23	68%
22	Lozier at the Terraces: (30 homes)	13	2	0	2	17	57%
23	Design Guild, Bennett, Rainier - on Katsura (15 homes)	13	4	1	0	18	113%
19	16 th Ct. Cul de Sac (15 homes)	4	6	2	3	15	100%
1,7 & 6	Northward Cottages, Duplexes & 12 th Ct. NE (57 homes)	7	6	3	5	21	37%
2B	Northward Ravena (14 homes)	8	3	0	0	11	79%
2C	Lozier Ravena (21 homes)	12	4	1	3	20	95%
Phase II	Stafford Homes (records from 19 homes)	8	7	1	1	17	89%
Phase II	Lozier Homes (5 homes sold)	4	1	0	0	5	100%

Single Family Sub-Totals:

Number of Homes = 248	94	46	10	16	166	78%
-----------------------	----	----	----	----	-----	-----

Multi-Family Homes

Div.	Neighborhood	Ages of Children				Total
		0-4	5-10	11-13	14-17	
3	Huckleberry Circle (60 condos)	5	4	2	0	11
20/21	Timmaron/Sorrento (48 condos)	5	2	1	1	9

Multi-Family Sub-Totals:

	10	6	3	1	20
--	----	---	---	---	----

**Single and Multi-Family
COMBINED TOTALS =**

104	52	13	17	186**
------------	-----------	-----------	-----------	--------------

** 56% of this total number (186) are children in age group 0-4
28% of this total number are children in age group 5-10

Rentals

Avalon Wynhaven
(333 homes & apartments,
all rentals)

Total Number of Children = 114
(estimated age breakout is: 75% are 0-12 years old)***
*** Exact age breakout is not available, due to Avalon Wynhaven policy

Grand Total - Children Ages 0-17 = 300

Home Sales Projections

The sale and occupancy of homes in Issaquah Highlands is estimated to continue through 2008 as illustrated in the table below. Achieving this sales goal will depend upon many factors including local economic conditions, interest rates, office park construction, builder production capacity and local job growth. In addition, the presence of a neighborhood elementary school within walking distance will impact the final rate at which homes are sold.

<i>Market Segment / Year Occupied</i>	Prior Sales	2002	2003	2004	2005	2006	2007	2008	Total
Village Homes:			30	158	138	128	52		506
Traditional Town Homes:	105	-	36	29	-	-	-		170
Rental Apartments and Townhomes:	333								333
Town Center Rental and Condo Homes:		-	-		200	200	206	200	806
Affordable Housing (Family) - City Sponsored:				100					100
Traditional Single Family Detached Homes:	305	45	118	200	275	230	162		1,335
Total:	743	45	274	649	613	558	368		3,250

The first step toward achieving the occupancy goals are sales to builders. Sales activity at Issaquah Highlands supports these projections with contracted lot sales totaling over 1,200 through December 31, 2002 and another 200 in the 2003 sales plan. Builders are actively under construction on their first units with 85 homes sold through June 8th 2003. Builders are aggressively marketing these homes to buyers. Growing home occupancy will continue to drive the increase in school age children in the community. This projection has been updated to reflect current sales successes and changes in the market.

Letter from the Issaquah School District

We are pleased to publish a letter from the Issaquah School District in response to our recent meetings and presentation of census information we provide them. We want to advise our residents, however, that the School District has promised to provide feedback to our community in late August with regard to improved bus routes for our children to include shorter durations on the rides to and from school.

What About a New Elementary School in Issaquah Highlands?

Here's what we know right now:

- The Issaquah School District intends to build the elementary school when we're confident that we have at least 350 elementary students in Issaquah Highlands to attend it. It takes 18 to 24 months to permit and build a school, so we are watching growth in Issaquah Highlands carefully to be prepared to build it when adequate enrollment is assured.
- The Issaquah District has bonds already approved to build the school.
- The Issaquah Highlands elementary school is included in our Capital Facilities plan that is updated yearly for King County.

Meanwhile:

- The new boundary for Clark Elementary was created to accommodate the anticipated elementary school children from Issaquah Highlands until the time when work begins on the Issaquah Highlands school.

- Clark Elementary offers an excellent school program and welcomes Issaquah Highlands families – both children and parents. The Issaquah District wants you to consider Clark your school until the time is right to build the elementary school in Issaquah Highlands. For questions about Clark, you can call 425-837-6300.

- Bus service to Clark Elementary will be provided over the most direct route possible. Bus routes for the 2003/2004 school year may vary depending upon the number of children to be picked up in Issaquah Highlands. In other words, if we have enough children within the community we can fill the bus quickly and go directly to the school. If there are fewer children, the bus needs to travel farther to other neighborhoods to gather a full load. In any event, however, it is district policy to design a route no longer than 45 minutes, and most are shorter.

- The Issaquah School District is proud to partner with Issaquah Highlands to create a new community and to provide an excellent education and a high level of service to our students and their families.

WELCOME TO ISSAQUAH SCHOOLS!

Resident Volunteers Needed



The community needs your help on committees. Consider just a few hours each month, develop friendships, and enhance your community and your skills. We need immediate help in the following areas:

Adopt-a-Wetlands Committee

Work parties twice monthly. Second Saturday AM and last Wednesday evening after work. Wonderful learning experience with your very own IH baseball cap and matching t-shirt. Ideal activity for parent/child participation.



Trails Maintenance

We are in need of your help four hours every other month for maintenance of Kathy's Trail and to help King County with the county trail north of the rural road. Some of the volunteer activities would include laying down gravel, pulling weeds, and clearing trail overgrowth. You only need to walk Kathy's Trail to see the benefits of this activity.



Community Gardening

We found our chairperson, now she needs help in the development of the Pea Patch gardening that will be available to the residents of Issaquah Highlands in the spring 2004. Can you donate two hours each month to help plan this terrific opportunity?



Contact Vicki Stier, Executive Director at 206-701-0341 or vstier@portblakely.com

PRSR STD
U.S. POSTAGE PAID
ISSAQUAH, WA
PERMIT NO. 83



Sunday

Monday

Tuesday

Wednesday

Thursday

Friday

Saturday



Calendar of Events August 2003

RSVP today! (206) 701-0344

1

2

Investment Club
8:00 a.m.

Concert in the Park
Johnny Lewis Trio
2:00 - 5:00 p.m.

Spiritual Discussion Group
6:30 - 8:00 p.m.

Aquatic Center Task Force
6:30 - 8:00 p.m.

Bunko
7:00 p.m.

Children's Play Time
12:00 p.m.

Basketball
6:30 p.m.

Scrapbooking
6:30 - 8:30 p.m.

Dance Lessons

Mommy & Me Playgroup
Field Trip
10:30 a.m.

History of Issaquah
7:00 - 8:00 p.m.



3

4

5

6

7

8

9



Children's Play Time
12:00 p.m.

Parks & Trails Committee
6:30 - 8:00 p.m.

Basketball
6:30 p.m.

Dance Lessons

Technology Task Force
7:00 - 8:30 p.m.

Mommy & Me Playgroup
Field Trip
10:30 a.m.

10

11

12

13

14

15

16

Investment Club
8:00 a.m.

CDC Workshop
11:00 a.m. - 1:00 p.m.

Pets 'n' Pals Committee
6:30 - 8:00 p.m.

Spiritual Discussion Group
6:30 - 8:00 p.m.

Children's Play Time
12:00 p.m.

Homemade Gourmet
Cooking Class
6:30 - 8:30 p.m.

Basketball
6:30 p.m.

Dance Lessons

Mommy & Me Playgroup
Field Trip
10:30 a.m.

IH Board of Directors
5:30 - 6:30 p.m.

17

18

19

20

21

22

23

Mommy & Me BBQ
5:30 - 8:00 p.m.

An Evening with
Washington Wine
7:30 p.m.

Children's Play Time
12:00 p.m.

Basketball
6:30 p.m.

Dance Lessons

Communications Committee
6:30 - 8:00 p.m.

Mommy & Me Playgroup
Field Trip
10:30 a.m.

Cottages Board of Directors
6:30 - 7:30 p.m.



24/31

25

26

27

28

29

30