



# ISSAQUAH HIGHLANDS Connections

January 2004

## Community Association Contact Information

### Association Executive Director

*Vicki Stier*

vstier@portblakely.com

### Association Administrative Assistant

*Mary Birren*

mbirren@portblakely.com

### Community Information Coordinator

*Oscar Kelley*

okelley@portblakely.com

### Association Events Manager

*Sondi Lind*

slind@portblakely.com

### Neighborhood Association Coordinator

*Brenda Jacobs*

bjacobs@portblakely.com

### ARC Community Coordinator

*Donna Burris*

dburris@portblakely.com

### Builder Liaison Coordinator

*John Sharp*

jsharp@portblakely.com

### Association Accountant

*Jocelyn Johnson*

jjohnson@portblakely.com

(206) 225-2316

### Avalon Wynhaven Property Manager

*Lonnie Fein*

(425) 392-7800

### Street Address

1401 N.E. Park Drive

### Mailing Address

1775 12th Avenue NW, Ste. 101

Issaquah, Washington 98027

Ph (425) 427-8736, Fax (425) 427-8050

### Association Office Hours

Monday - Friday 8:30 A.M. to 5:00 P.M.

### Community Center Marketing Hours

Monday - Friday 12:00 P.M. to 5:00 P.M.

Saturday - Sunday 11:00 A.M. to 6:00 P.M.

[www.IHwebsite.com](http://www.IHwebsite.com)

## Issaquah Highlands' Committee and Governance Opportunities

With every New Year, we look to our New Year resolutions to set goals and get motivated. Why not resolve to VOLUNTEER within your community? There are many opportunities at Issaquah Highlands from either programming to committee and governance. All are very important in creating our urban village that has attracted us to live at Issaquah Highlands. Our volunteers receive many rewards and volunteer for several different reasons. Remember that your community needs your talent and it is appreciated. Your participation will strengthen your commitment to volunteering when you can see the benefits to the community. Get involved and VOLUNTEER as part of your New Year's resolution.

### Pet Committee

The Issaquah Highlands Pet Committee's goal is to provide a set of rules and guidelines that will provide a safer, cleaner, and more pleasant community that all current and future residents will gladly call "Home." These guidelines will enhance the living environment not just for pets and their owners, but also for ALL residents of the community.

This group of individuals researches and recommends policy for pet registration, installation of pet stations, development for an off-leash area by Spring 2004, fundraisers for pet-friendly causes, improved online Pets n' Pals referrals, governance of pet policy and much more.

### Parks & Trails Committee

This committee keeps very active with their contributions to park design and amenities, trail maintenance at Issaquah Highlands for trail clean up and trail clearing groups for the existing trail system that has been completed. As the trails are expanded, this group will need to encourage and engage volunteer time and efforts within the community and in conjunction with the King County Park/Trail systems. This is terrific outdoor activity with instant results admired and enjoyed by all!

**Adopt-A-Wetland** is also a critical part of this committee. The Adopt-A-Wetland Committee has been created for preservation and maintenance activities to

be performed by interested, environmentally concerned homeowners of Issaquah Highlands. It is a tool for ongoing stewardship and protection of Issaquah Highlands Wetlands, preserved and mitigated wetlands.

The Adopt-A-Wetland Program (AAWP) is designed to provide homeowners and local community members, including schools, with opportunities to get involved and learn about wetlands through hands-on wetland activities.

The success of the Adopt-A-Wetland Program depends upon the level of commitment and responsibility toward protecting the wetland of the volunteers, and on good organization. The committee invites all interested residents to help as more wetland areas are to be developed in Phase II that will require maintenance.

Volunteer maintenance tasks include weeding, watering new plants, grass trimming, and bark installation around the bases of all trees and shrubs in all areas of the wetland mitigation site. Activity is more frequent in the warm months and less active during the winter months.

The City of Issaquah Parks Department personnel that eagerly work with the residents to accomplish these goals join this group in meetings. They also assist the Pet Committee with the dream of the Off-leash Dog Park.

see COMMITTEES on page 2

## Events/Activities Committee

This active and fun committee is responsible for the events planning at Issaquah Highlands. The members recruit and obtain program sponsors, volunteers, vendors, locations, procurement of supplies, scheduling of event participants, staffing, setup and breakdown. This committee is enhanced with a full-time staff Events Manager.

## Highlands Fiber Network Advisory Committee

This newly created committee is to help in the management and oversight of the existing high-speed network system. The committee assists in decisions to the growth of the system, policy and review of finances. The Issaquah Highlands modern underground data center has corporate grade network equipment, servers, security systems and backup systems inside the community that will be securely connected with the fiber optic network.

Port Blakely staff consultants are participating with this group for the future success of this amenity to remain with Issaquah Highlands Council. A diverse group of residents are needed to include our “techies”, as well as good, common sense business or management types. This committee is very critical for the success and future security of the wired network at Issaquah Highlands.

## Communications Committee

This committee’s primary function is to “spread the word” for a variety of events and important information by using various communications methods. Members make recommendations regarding neighborhood communications, organizing, publishing, advertising revenue for the Connections newsletter, signage, e-mail, mail, and Issaquah Highlands’ own website, [www.IHwebsite.com](http://www.IHwebsite.com). The committee is exploring other, improved newsletter formats and a new, user-friendly website design to encourage greater use of the website by our residents.

## Architectural Review Committee

Maintain the vision and preserve the overall quality and beauty of Issaquah Highlands. The ARC meets once each month to review applications received from residents for improvements, identify and address violations and update residents on maintenance needs. The most common reviews are requests for fences, selection of exterior paint colors or major landscape upgrades. This is an appointed position.

## Community Development Committee

The Issaquah Highlands CDC (Community Development Committee) consists of residents, Port Blakely staff consultants and Community Association Executive Director, and is part of the Issaquah Highlands Community Association. The CDC initially got together because of their interest in the park development aspect of their community and evolved into a multi-faceted interest group. This group will be progressing even further as owner representatives as potential members to the Highlands Council Board of Trustees and the Council Development Committee (CDC). There is an interview and appointment process for candidates.

This committee serves in the capacity as the Issaquah Highlands Task Force to research and review the issues important to the owners for the current and future development of the urban village. Example of recent items for the CDC have been the 9<sup>th</sup> Grade School proposal in lieu of an elementary school, the development and schedule of City parks, impact of I-90 interchange, Microsoft Campus and retail village, Aquatic Center feasibility, and review of neighborhoods for review of “voting members.” The committee members provide recommendations to the Board of Directors for decision-making based on the findings and desire of the majority of the Community.

This Community Development Committee has been designed to serve in an advisory capacity under the Issaquah Highlands Board of Directors. All committee issues start at this committee and then are delegated to other committees or task force groups. This committee serves as a sounding board for the developer (Port Blakely Communities) on key issues, as well as partaking in many city meetings and public hearings.

As this Committee is being structured to have rotating terms, new positions will become available for appointment to this committee. It is recommended that any new members who are named or elected to this committee shall have served at least one-year prior on one of the sub-committees prior to serving on the CDC.

If you are interested in becoming a part of what makes Issaquah Highlands great, please volunteer today. Contact Vicki Stier, Executive Director, at 206-701-0341 or [vstier@mindspring.com](mailto:vstier@mindspring.com).

*Please consider the personal testimonial about the value of volunteering on the next page.*

JANUARY COMMUNITY MEETINGS

### Pets 'n' Pals Committee

Tuesday, January 6, 6:30-7:30 P.M.

### Sorrento Homeowners Meeting

Thursday, January 8, 7:00-8:30 P.M.

### City of Issaquah Major Development & Regional Affairs Committee

Monday, January 12, 5:30-7:00 P.M.

City Hall/Police Facility, 130 E. Sunset

### Issaquah Arts Commission

Monday, January 12, 6:00-7:30 P.M.

City Hall/Police Facility, 130 E. Sunset

### Parks and Trails Committee

Tuesday, January 13, 6:30-8:00 P.M.

### Communication Committee

Wednesday, January 14, 6:30-8:00 P.M.

### IH Board of Directors

Thursday, January 15, 5:30-6:30 P.M.

### Community Development Committee (CDC)

Thursday, January 15, 6:30-8:00 P.M.

### Issaquah City Council

Monday, January 19, 7:30-9:00 P.M.

South Chambers, 135 E. Sunset Way

### Huckleberry Circle Annual Meeting

Monday, January 26, 6:30-8:00 P.M.

### City of Issaquah Parks Board

Monday, January 26, 7:00-9:00 P.M.

South Chambers, 135 E. Sunset Way

### Cottages Board of Directors

Thursday, January 29, 6:30-7:30 P.M.

*Meetings are held at the Issaquah Highlands Community Center on Park Drive unless otherwise noted. All meetings are open. You are welcome to join us!*

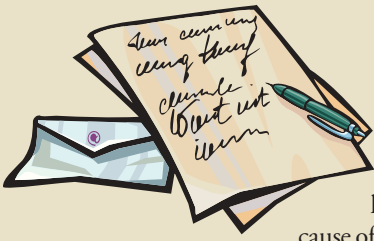
## Would You Like To Name a Park in Issaquah?

Here's your chance! There are three City parks planned for the Issaquah Highlands, and all need names. It is the policy of the City of Issaquah to choose names for parks and public facilities based upon the following criteria:

1. Historical or cultural significance
2. A natural or geological feature.
3. Neighborhood or geographical identification
4. An individual (living or deceased) who has made a significant contribution to the community.

Please send your suggestions by e-mail to Al Erickson at the Issaquah Parks Department, [ale@ci.issaquah.wa.us](mailto:ale@ci.issaquah.wa.us).





## What If I Could Make A Difference?

My wife Debby and I have lived in Issaquah Highlands for over two and a half years, and moved here primarily because of the location, and the wired community.

Little did we realize that the one thing we would experience of greater value to us is the sense of a real community.

When we moved into our townhouse, we needed some help getting our Internet connection to work. An hour later, a gentleman named Gary Haddan showed up at my doorstep ready to help. After everything was fixed, I found out that Gary lived in the community, and really enjoyed being able to work and live in the same community. He is involved in three different volunteer groups within the community, and serves on the CDC board. I thought, wow, he didn't have to come out to the home, but he went above and beyond that day to help us out, which Gary seems to do everyday for the whole community.

A few months later we went to a community event and met Sondi, who coordinates all the fun events we get to go to for the Highlands. We built up a relationship with her, and volunteered to help out with an upcoming event. Manning the barbecue, we started to turn out lots of burgers for the residents, and even though we got more people than expected it turned out to be a lot of fun at the end of the day. That night Debby and I talked about the fun we had volunteering our time for the community, and wondered when we could do it again.

Later on I heard about the Tech Task Force within the community, and since that is one of my interests I thought that I'd really like to join up. So I contacted the main info center and talked to Vicki (Association Executive Director) about how I could. I also expressed to her that I was worried that I wouldn't fit in since I don't have an IT degree and most of the people would be "techie" Microsoft guys. She told me not to worry, and just go with the intention of being open minded and be ready to express my ideas. Little did I know, she was right! The group was very diverse, and was really receptive to all different kinds of people since they realized that the more people in the group, the more ideas they'll get.

I have been in that group ever since, and then got asked to Chair the Parks & Trails Committee. This made me nervous as I am one of those who enjoy using parks, but have never known about the inner workings of a park. We now have 8 members total, and I feel that we are a success because of the team that we have. None of us in the group are "parks experts," yet because we have a desire to make the parks the best they can be we have been successful so far in working with the city on ideas and proposals.

What I have learned is that I really enjoy Issaquah Highlands because of the opportunities it has given me to get involved. I have never lived in a community where it was so easy to get involved and help change the things that you enjoy the most. We have people working on: Parks, Pets, Wetlands, Communication, Technology, Pools, Town Center and the list continues. The one thing that almost held me back was my fear of failing because I wasn't an expert on the Parks or Technology. What I found out was that you don't need a group of experts, but just a group of people dedicated to making the community the best it can be. They need to be open to new ideas, learning, and have the courage to speak their mind.

So I must ask, what if you volunteered today to make a difference in Issaquah Highlands? You don't need to be an expert, just a person who wants to make the place they live a better place. To get involved just head over to the info center and ask what groups need volunteers, and I'll bet you'll be surprised what fun you can have in this community making a difference.

—Mike Krassner

## Port Blakely Unveils New Logo

Port Blakely Communities is unveiling a new look. Why the update?

Our parent company, Port Blakely Companies, is both a family-owned company and a family of companies that includes Port Blakely Communities, Port Blakely Tree Farms, Ltd. of Washington and Oregon, and Blakely Pacific, our timber subsidiary in New Zealand.

While we are separate and distinct companies, we share a common heritage and common values: integrity, quality, innovation, and stewardship. Those values stem from more than a century of family ownership, and we want our identity to reflect those traditions as well as the modern, innovative concepts that make our communities so distinctive.

Nothing about the company itself is changing; we're simply updating our look.



At Port Blakely Communities, we take a long term view in all that we do. We design our communities to preserve the best of our society and our environment, and we build them with quality and integrity to last for generations to come.

Some might think that is an unusual philosophy for a real estate company. But we come by our philosophy naturally because, although Port Blakely Communities was founded in the 1990s, our roots go back 150 years.

Port Blakely Communities is part of a family of companies that includes Port Blakely Tree Farms and Blakely Pacific, Ltd., a forestry subsidiary in New Zealand. Owned by the Eddy family and its descendants for more than a century, Port Blakely can trace its beginnings to the earliest settlements in the Washington Territory.

The founding member of the Port Blakely family of companies was the Port Blakely Mill Company, the precursor to Port Blakely Tree Farms. It was started by William Renton, a Nova Scotia sea captain who came to the Pacific Northwest in 1852. Renton is the man for whom the city of Renton, Washington is named.

After several false starts, Captain Renton built a sawmill on Port Blakely Harbor on Bainbridge Island. Founded in 1864, The Port Blakely Mill Company operated successfully for forty years, shipping lumber all over the world, to California, Australia, England, Germany, France, South America and the Eastern United States. In fact at one time, The Port Blakely Mill Company boasted the world's largest sawmill under one roof.

### A FAMILY TRADITION BEGINS

In 1903, The Port Blakely Mill Company and its timber lands were purchased by Ned Skinner and John W. Eddy who started a successful shipbuilding and lumber partnership. When the two partners went their separate ways in 1923, the Eddy family took full ownership of The Port Blakely Mill Company, beginning a tradition of family ownership and environmental stewardship that continues to this day.

After leasing out the mill for several years, the Eddy family closed it and turned their focus to acquiring and managing timber land. The family was always looking for innovative ways to improve forest yield and



# C A L E N D A R O F E V E N I N G S

## Eastside Mosaic Gathering

Sundays in January 6:00 - 7:30 P.M.  
Avalon Wynhaven

For more information please contact: Barry Odom at  
[barry@eastsidemosaic.com](mailto:barry@eastsidemosaic.com) or 425-557-0087

Eastside Mosaic is a new church emerging on the Eastside. A core group has been forming and will begin meeting on Sunday evenings. Mosaic's mission is to be "a catalyst for life transformation," both on a personal and cultural level. This "core" will prepare to launch a transformational movement focused on discovering what it means to be a follower of Jesus Christ. Childcare is provided for birth through kindergarten at Avalon, 1<sup>st</sup> - 5<sup>th</sup> grade at the Community Center. Come check it out! The Mosaic is missing some pieces without you!

## Mommy and Me Playgroup

Every Thursday 10:30 A.M. - 12:30 P.M.  
(Every 3rd Thursday is Craft Day - \$2 per child)  
Fire Station Meeting Room  
RSVP Lana at 425-427-1572 or [Lana@ihmail.com](mailto:Lana@ihmail.com)

This is a great way to meet parents and kids in the neighborhood. Come and enjoy a nice clean environment for your children to play. New moms, babies, dads, and caregivers welcome!!! Small snack provided.

## Sherm's Friday Evening Fish Fry

Every Friday Evening in January 5:30 - 7:30 P.M.  
Regular Menu will be Served As Well

Sherm's BBQ in Issaquah Highlands 425-392-4508 [www.shermsbbq.com](http://www.shermsbbq.com)  
Mon.-Fri. Lunch 11:30a.m.-2:00p.m.  
Mon.-Sat. Dinner 5:30p.m.-7:30p.m.  
Sat.-Sun. Breakfast 8:30a.m.-11:30a.m.

## Start the New Year with a Great Breakfast and a 2-for-1 Breakfast Special from Sherm's BBQ

Each Saturday and Sunday during Sherm's Brunch  
Hours 8:30-11:30a.m. throughout the month of January  
**Buy one breakfast entree at regular price and get the second breakfast entree free.**

## Sherm's January Crab Harvest Fest

In celebration of the best time of year for peak Dungeness crab flavor Sherm's will be serving dishes featuring crab throughout the month.

After the New Year Holiday on Monday & Tuesday, January 5th & 6th, we'll be serving Seafood Gumbo with Shrimp & Crab.

On Fish Fry Fridays, January 9 & January 23 we'll be serving Crab Cakes.

For Breakfast on January 10 & 17, we'll be preparing Frittatas with Crab & Creole Tomato Sauce

## Investment Club

Saturdays, January 3<sup>rd</sup> and January 17<sup>th</sup> 8:00 A.M.  
Community Center

All Issaquah Highlands neighbors are invited! On the first and third Saturday each month, we will meet over coffee and doughnuts to discuss investing in stocks, bonds and mutual funds. The objective is to learn about investing wisely, to benefit from the knowledge and experience of others, to meet new friends and neighbors, and perhaps to make a few bucks as well!  
For additional information visit [www.IHInvestmentClub.com](http://www.IHInvestmentClub.com)

## Kids Movie and Game Night

Friday, January 16<sup>th</sup> 7:00 - 9:00 P.M.  
Community Center

Cost: \$2 per child. RSVP by Wednesday, January 14<sup>th</sup>

Parents—do you need some time to yourself? Drop your kids (5 years and older) off and let them enjoy watching a Disney favorite and playing their favorite games while meeting other kids in the neighborhood. You enjoy an evening to yourself! Kids, wear your slippers and pajamas and bring your favorite game! Popcorn will be provided.

## Women's Social—Scrapbooking

Tuesday, January 20<sup>th</sup> 6:00 - 9:00 P.M.  
Please RSVP by Monday, January 19<sup>th</sup>

Gals, this is your night to get away from the busy week and socialize with other women in the community. We will have a representative from Creative Memories and you will be able to create the pages for yourself or to be donated to charity. Refreshments will be served.

## Washington Wine Tour

Saturday, January 24<sup>th</sup>

Bus leaves the IH Park-n-Ride at 8:30a.m. sharp. Returns 7:00p.m.  
Cost: \$69 per person. Must RSVP and pay by January 18<sup>th</sup>  
Starbucks Coffee will be served on the bus!

Washington Wine Tours welcomes Issaquah Highlands on a tour to Leavenworth for a day of wine and beer tasting and of course shopping at Washington's Bavarian themed town! We are providing a special shuttle from Issaquah just for your community. Here are the details:

This full day tour includes pick-up and return service from the Issaquah Highlands Park n Ride, visits to two wineries (Silver Lake Winery, the 2nd winery TBD) and Gustav's brewpub for wine and beer tasting. You will have time to shop the delightful shops of Leavenworth before returning to Issaquah. Lunch is provided at Gustav's with the beer tasting. A knowledgeable tour guide to give you information about the wineries and brewpub we will visit.

## Highlands Comedy Night and Wine Tasting

Friday, January 30<sup>th</sup> 7:00 - 9:30 P.M.  
Community Center

Donation of \$15 per person or \$25 per couple  
RSVP by January 27<sup>th</sup>

### The Lighter Side of Wine Tasting

Have you read the back of a Sauvignon Blanc bottle lately? "The nose of this wine is intense; exotic aromas of cantaloupe, lime, pineapple, and fresh-cut grass jump out of the glass." Do you know what this means? Come find out, as we taste wines in search of the cantaloupe undercurrent and then take some time to laugh about wine tasting and life itself as we are entertained by four comics who are regulars at Seattle's Comedy Underground.

## Attention Guys of Issaquah Highlands!

### Superbowl Sunday, February 1<sup>st</sup>

Community Center

What do you get when you cross Gladiator, Braveheart and John Madden? A SUPERBOWL XXXVIII Party! Come watch the best commercials of the year with a bunch of guys from your neighborhood. Invite your friends from other "tribes" as well. Tons of junk food and soda, or bring your own with a few prize giveaways thrown in. All guys welcome. Kick off is at 3:00 PM, so come a little early. \$5 per guy will cover food and prizes. For more info contact [barry@ihmail.com](mailto:barry@ihmail.com). Sponsored by Eastside Mosaic.

All activities, events, or advertisements do not necessarily reflect the views of Issaquah Highlands Community Association, its residents, or staff.

The Issaquah Highlands Community Association would like to make sure all residents can participate in any event hosted for the enjoyment of the community. Frequently there is a fee to help offset the costs of the event. If you are in need of financial assistance or a discount, please contact Sondi at the Community Center at 206-701-0344 and confidential arrangements will be made.

## Events in the works... and other announcements

### Meals for New Moms

Attention all new moms and moms-to-be! Enjoy those first few weeks with your new little one. Let us cook for you! If you or someone you know in Issaquah Highlands has just brought home a newborn (or are about to...) contact us and we'll be happy to coordinate some days to drop off meals for you and your family. For more information, or to be added to our list of volunteers, please contact Sara Winnick at sara.winnick@ihmail.com or 425-313-0298.

### New Parents Group

If you would be interested in meeting with other new parents (children birth - 1 year) in the neighborhood, I would love to hear from you. I am considering starting a group in January that would meet either once a week or every other week, depending on interest level. Ideas for meetings include time to chat with other parents about whatever topics are on your mind; set discussion topics that could be determined in advance based on the interests of the group; time to interact with babies through song, play, and crafts; and outings with parents and babies. If you would be interested in participating in this group, please contact Vanessa Cusimano at 425-394-0417 or vanessacusimano@hotmail.com

### Free Bus Ride

Thanks to Sound Transit, Port Blakely, the City of Issaquah and King County Metro, the interim Park & Ride Lot is now open! The lot provides a convenient location for residents of Issaquah Highlands and the Sammamish Plateau to leave their vehicles and catch ST Express Route 554 to downtown Seattle.

Please stop by the Community Center for a "Free Bus Ride" ticket (one ticket per person please).

To find out more about ST Express bus service please visit our website at [www.soundtransit.org](http://www.soundtransit.org) or call us at (888) 889-6368 or (888) 713-6030 TTY.

### The Community Center is Now Available to Rent!

The Issaquah Highlands Community Center is now available on a rental basis for all your meetings, parties and social gatherings! If you are looking for a cozy, family feeling complete with couches, over stuffed chairs, kitchen, and even a fireplace the Community Center is your place. If you are looking for a business environment with tables, chairs and coffee service the Community Center will be the perfect spot! Please contact Sondi at 206-701-0344 for more information and reservations.

**RSVP today!**  
**(206) 701-0344**

### It's Exciting To Be Part of the 2004 Issaquah Highlands Donations Experience!!

*Every month in 2004 we will feature a donation opportunity. If you see one that touches your heart, please take the chance to help.*

#### Get "charged up" when you help someone else get "charged!"

Temporary winter response shelters for the homeless families in Seattle have expressed a dire need for batteries (only sizes AA and D are needed). Since the temporary shelters do not include electricity, the homeless have to depend on batteries for flashlights. Therefore, during the month of January we will be accepting with open arms sizes AA and D battery donations here at the Issaquah Highlands Community Center.

Your donations will most definitely be appreciated! Drop by the Community Center with your batteries, grab a cup of hot coffee or hot chocolate and a homemade cookie, and chat awhile. We'd love to see you.

#### Donations for Mommy and Me

The Mommy and Me Playgroup of Issaquah Highlands is asking for donations of small to medium sized gently used balls and toys. If you can help out please bring your donation to the Community Center and place it in the decorated Mommy and Me box. Thanks!

## An Ideal Partner

### The Issaquah Chamber of Commerce

What makes the Issaquah Chamber of Commerce the ideal partner for every business, and professional person in Issaquah? The Chamber stands ready to serve this vibrant community and is committed to working with community and business leaders promoting positive economic growth, and to respond to the issues surrounding that growth.

What makes Issaquah the ideal place for business and commercial development, and the ideal place to raise a family? A first-rate school system, a variety of quality housing options, and a safe family environment that continues to attract hundreds of new families each year. Recreational options are plentiful and include beautiful Lake Sammamish, 100 miles of hiking trails, parks, plus ski slopes, and world-class golf courses nearby.

The Issaquah Chamber of Commerce is a voluntary organization of business professionals and citizens who are investing their time and money in a community development program—working together to meet the challenges before us today, with a constant reminder of their impact on our future.

- To newcomers, we offer a friendly welcome and important information to help you feel at home and make your transition as smooth as possible.
- To visitors, we offer information and advise to make your trip to Issaquah a memorable one.
- To companies considering relocating to our area, we are eager to assist you while you are considering sites during your transition, and afterward as you become a valued corporate citizen of Issaquah.
- To schools, we pledge the support of the business community in our mutual quest for excellence in education.
- To government officials, we present a unified voice of the business community in helping form consensus on major decisions.
- To citizens, we are committed to improving the quality of life in Issaquah by ensuring a stable business climate.
- To businesses located in Issaquah, we stand by our mission to advance and promote business by providing a forum to address critical issues, and unite and support our membership and community through programs, events and services.

The members of the Chamber have made an investment in the future, and are continually working to improve the quality of life and the business environment in the Issaquah area through balanced economic growth.

#### Chamber of Commerce Networking Breakfast

Tuesday, January 13<sup>th</sup> 7:30 A.M. Pogacha of Issaquah  
\$10 per person. Reservations are required.

Please call the Chamber at (425) 392-7024 for more information.

#### Chamber of Commerce Membership Luncheon

Thursday, January 22<sup>nd</sup> 11:30 A.M. Holiday Inn of Issaquah  
\$18 per person. Reservations are required by Friday, January 16.  
Please call the Chamber at (425) 392-7024 for more information.

#### Chamber Business After Hours—Essentials for Daily Living

Wednesday, January 28<sup>th</sup> 5:30 P.M.  
\$10 per person. Reservations are required.  
Please call the Chamber at (425) 392-7024 for more information.

#### Chamber New Member Orientation

Friday, January 30<sup>th</sup> 12:00 noon Alexander House

sustainability. In fact, in 1923 as part of his research into ways to improve reforestation, James G. Eddy founded what is now known as the Institute of Forest Genetics in Northern California. In 1946, when advancements in science and technology made it feasible to cultivate a forest from seedlings to harvest, the family began practicing what would later become known as sustainable forestry—50 years before it became the national standard.

In 1962, the family created a real estate subsidiary managed Renton Village Company, a commercial real estate partnership. This first Port Blakely venture into real estate ended in 1987. In 1990, Port Blakely Tree Farms (formerly The Port Blakely Mill Company) and two other partners bought the real estate portfolio of the Glacier Park Company and formed Port Blakely Communities, Inc. (PBC). PBC provided planning and management services for the partnership's projects and contracted out engineering and on-site work. In the mid-90s, Port Blakely bought out the other partners, becoming the sole owner of the real estate projects.

**INTEGRITY, QUALITY, INNOVATION, AND STEWARDSHIP**  
Building on the century-old traditions of Port Blakely Tree Farms, PBC applies the Eddy family's values of integrity, quality, innovation, and stewardship to the business of real estate. Working with neighbors, regulators, and elected officials, PBC creates residential and mixed-use urban villages that embrace the principles of smart growth and sustainability. In partnership with the region's premier homebuilders, we create communities that are known for their quality construction, innovative design, small-town feel, and respect for the environment.

Residents of PBC communities are familiar with the spectacular natural amenities that distinguish a PBC project: lakes, trails, parks, and permanent public open space. But PBC's regard for the environment is also evident in ways that cannot readily be seen.

For example, engineers and scientists with Port Blakely Tree Farms and Port Blakely Communities have developed a number of innovative environmental safeguards, many of which are now a part of local and state regulations. And rather than send countless tons of dirt to area landfills during the construction of Issaquah Highlands, PBC "recycled" the soil by separating it into its component parts. The top soil was used to enhance gardens and yards, the rocks were put into culverts to help filter and cleanse runoff in order to protect water quality in area streams, and the remaining fill was used to create parks and ball fields. In addition, PBC led the way in turning an environmental obligation into a community amenity by building scenic lakes that not only enhance property values and enjoyment, but also filter storm water before it returns to fish-bearing streams.

**AWARD-WINNING PERFORMANCE**  
For a relatively young company, PBC has amassed an impressive list of regional and national awards for its innovative design and environmental sensitivity.

For example, in 1993, PBC received the Environmental Improvement Grand Award from the Associated Landscape Contractors of America for PBC's Montreux community.

Montreux, located in the Lakemont area of Issaquah, features several small lakes made even more beautiful with a fountain and underwater lighting. The Environmental Improvement Award recognized PBC's innovative use of the lakes to clean and filter storm water before it returns to salmon streams.

PBC's regard for the environment is a hallmark of all the company's projects. From 1993 to 2003, its commitment to smart growth and sustainability earned Port Blakely Communities more than a dozen regional and national awards, including:

- \* 1995 American Planning Association Award for the Issaquah Highlands Community Plan;
- \* 2001 Gold MAME Award for Community of the Year for PBC's Woodside Community;
- \* 2003 Silver LEED (Leadership in Energy and Environmental Design) Award from the United States Green building Council for the Issaquah Highlands Fire Station #73;
- \* 2003 award from the Master Builders Association naming Issaquah Highlands Puget Sound's Highest Rated Built Green™ Community.

In the future, PBC plans to broaden its real estate focus from planned communities to include urban in-fill with office, retail, and residential.



## Our Communities

The hallmarks of a PBC community are innovative design, environmental sensitivity, and quality construction. In keeping with the Eddy family values, all PBC communities preserve the traditional sense of community while embracing the principles of sustainable development and "smart growth" by clustering homes, providing on-site commercial and retail opportunities, and preserving large tracts of permanent open space and wildlife habitat.

### Issaquah Highlands

The award-winning community of Issaquah Highlands combines an old-fashioned neighborhood feel with innovative design. Its front porches, tree-lined streets and spacious sidewalks encourage leisurely walks and neighborly chats. In addition, Issaquah Highlands' "green-built" design seeks to reduce traffic congestion by making it possible for residents to work at home or within the community. Embodying the principles of smart growth, Issaquah Highlands plans include 1,500 acres of open space, parks and trails, an elementary school, a 1,000 car park and ride garage, a commercial/retail center and a planned 30-building, 150-acre Microsoft campus. [www.issaquahhighlands.com](http://www.issaquahhighlands.com)

### Woodside

Recognized for its smart growth design and environmental sensitivity, Woodside was named Community of the Year and won the Best Community Land Use Award at the annual 2001 MAME Awards sponsored by the Master Builders Association of King and Snohomish Counties. Port Blakely Communities dedicated more than 400 acres next to Woodside to King County to preserve the forest and provide recreation for hikers and mountain bikers. [www.liveatwoodside.com](http://www.liveatwoodside.com)

### Trilogy

Trilogy, formerly known as Blakely Ridge, is a master-planned community in Redmond for active adults aged 55 and over. Designed by Port Blakely Communities and built by Quadrant Corp. and Shea Homes, the 1,050 acre community will include 1,500 homes, condos and apartments, an 18-hole golf course, tennis courts, swimming pools, club houses, and more than 500 acres of open space and parks.

### Montreux

Montreux is a premier Port Blakely community that set new standards for quality and stewardship. Located in the Lakemont area of Issaquah, Montreux features 263 high-end homes and three small lakes made even more beautiful by a fountain and underwater lighting.

Montreux also includes 100 apartment units – the first income-qualified housing in the City of Issaquah. In addition, Montreux was among the first communities to transform a responsibility into an amenity by creating a spectacular lake that also serves to filter and cleanse storm water before it reaches fish-bearing streams.

### Kitsap

Still in the planning stages, our community near Lake Kitsap is intended to provide homes, jobs, and services for 1,200 families in Bremerton, Washington. The site is a 440 acre-parcel of Port Blakely land that was set aside for a mixed-used community as part of Kitsap County's Comprehensive Plan. Like all Port Blakely communities, the Lake Kitsap project calls for generous open space and hiking trails adjacent to 2,500 acres of working forest.





Sunday

Monday

Tuesday

Wednesday

Thursday

Friday

Saturday

# Calendar of Events January 2004

RSVP today! (206) 701-0344

*Community Center Services  
425-427-8736*

- ★ *Discount Movie Tickets*
- ★ *Notary Public Services*
- ★ *Limited Postage Stamp Purchase*
- ★ *Fax Sending and Receiving*
- ★ *Dry Cleaning Pick-Up/Delivery*
- ★ *Limited Photocopying*
- ★ *Issaquah Press Newspaper Stand*
- ★ *Lost and Found*
- ★ *Parenting Map Magazine*

Happy New Year!

Sherm's Fish Fry  
5:30 - 7:30 p.m.

Investment Club  
8:00 a.m.

1

2

3

Eastside Mosaic  
Gathering  
6:00 - 7:30 p.m.

Pet Committee  
6:30 - 7:30 p.m.

Mommy & Me Playgroup  
10:30a.m. - 12:30 p.m.

Sherm's Fish Fry  
5:30 - 7:30 p.m.

Sorrento Homeowners  
7:00 - 8:30 p.m.

4

5

6

7

8

9

10

Eastside Mosaic  
Gathering  
6:00 - 7:30 p.m.

Parks & Trails Committee  
6:30 - 8:00 p.m.

Communication Committee  
6:30 - 8:00 p.m.

Mommy & Me Playgroup  
10:30a.m. - 12:30 p.m.

Sherm's Fish Fry  
5:30 - 7:30 p.m.

Investment Club  
8:00 a.m.

IH Board of Directors  
5:30 - 6:30 p.m.

Kids Movie/Game Night  
7:00 - 9:00 p.m.

11

12

13

14

CDC  
6:30 - 8:00 p.m. 15

16

17

Eastside Mosaic  
Gathering  
6:00 - 7:30 p.m.

Martin Luther  
King, Jr. Day

Women's Social  
Scrapbooking  
6:00 - 9:00 p.m.

Chinese New Year

Sherm's Fish Fry  
5:30 - 7:30 p.m.

Mommy & Me Playgroup  
10:30a.m. - 12:30 p.m.

18

19

20

21

22

23

24

Eastside Mosaic  
Gathering  
6:00 - 7:30 p.m.

Huckleberry Circle  
Annual Meeting  
6:30 - 8:00 p.m.

Mommy & Me Playgroup  
10:30a.m. - 12:30 p.m.

Sherm's Fish Fry  
5:30 - 7:30 p.m.

Cottages Board Mtg  
6:30 - 7:30 p.m.

Comedy Night &  
Wine Tasting  
7:00 - 9:30 p.m.

Next week  
Sunday Feb. 1  
Superbowl Party!

25

26

27

28

29

30

31



## Automatic Withdrawals Available!

IH residents now have the option to have association assessments automatically withdrawn from their bank accounts (either checking or savings). It's simple to sign up: just fill out an authorization form, attach a voided check, and return to our office.

You can obtain a form in one of three ways:

1. The Community Center
2. Request an electronic version via e-mail from Wayne Hong, whong@portblakely.com, or
3. Download from www.IHwebsite.com

Please return the form to the Community Center or the address listed at the bottom of the form.

Bills will still be sent to those paying biannually by check. After signing up for monthly automatic withdrawals, you will not receive bills or statements unless there is a change. Reminder: for the neighborhoods that pay each month, by check or auto withdrawal, no statements are sent unless the account is past due or there has been a change. Please call association accounting at 425-391-4700 if you have any questions.

## Construction Update: Highlands Fiber Network Continues to Grow

Construction of the high speed data network is continuing in Phase II as contractors install fiber optic cable in underground conduit. Every attempt is being made to schedule the construction work so that new residents can connect to the system as they move into Issaquah Highlands. We are disappointed, however, to inform you that some construction work is behind schedule due to the large number of new homes being completed. To help bring the construction back on schedule, another contractor, Lane Communication, and their affiliate, Dial One, has been added to the construction team. We are also finding that certain installation work completed earlier this year is failing or may fail and need to be repaired. We will also begin assessing and repairing any damaged connections and fiber splices to bring further reliability to the new system within the next week.

We appreciate your support of our construction team during this busy time and we apologize for any delays in service you may have experienced. For certain Phase II homeowners, it may be necessary to temporarily interrupt your service, however, we will notify you of this likelihood prior to interruption.



We are committed to delivering the highest quality broadband connection and service team to Issaquah Highlands. We are offering affected homeowners service discounts in appreciation for their patience and understanding. Please do not hesitate to call Highlands Fiber Network at 425 427-0999 with any questions or concerns.

Thank you for your patience in this time of change.

Highlands Fiber Network

1775 12th Avenue NW, Suite 101  
Issaquah, WA 98027

Your place in the world.



PRSR STD  
U.S. POSTAGE PAID  
ISSAQUAH, WA  
PERMIT NO. 83