

# Why the Highlands Site is a great location for a new Neighborhood Elementary School

---

# Projected 2017/2018 Enrollment

---

Clark Elementary

808 students

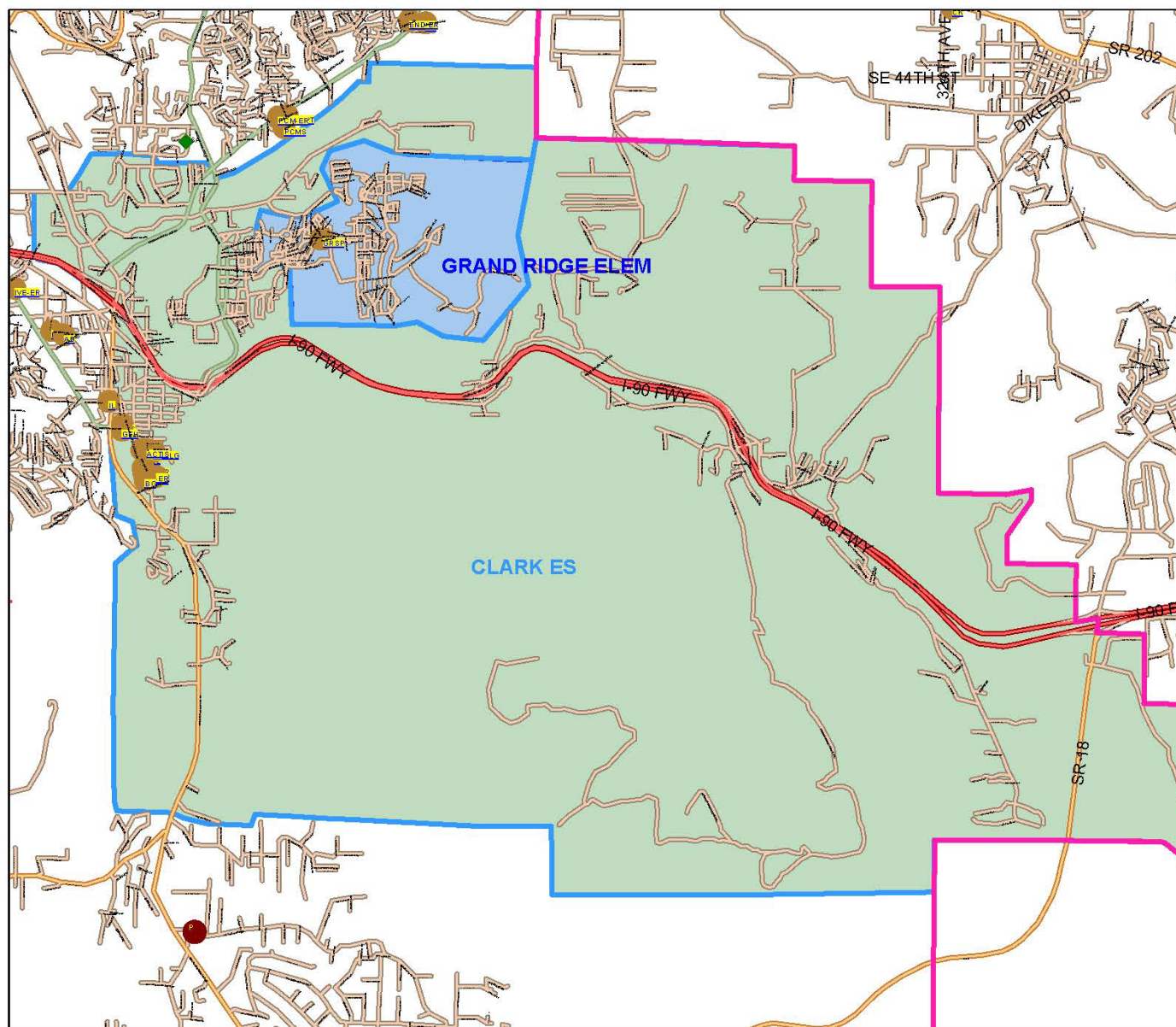
The largest elementary school will open September 2017 with 10 portable classrooms

Grand Ridge Elementary

735 students

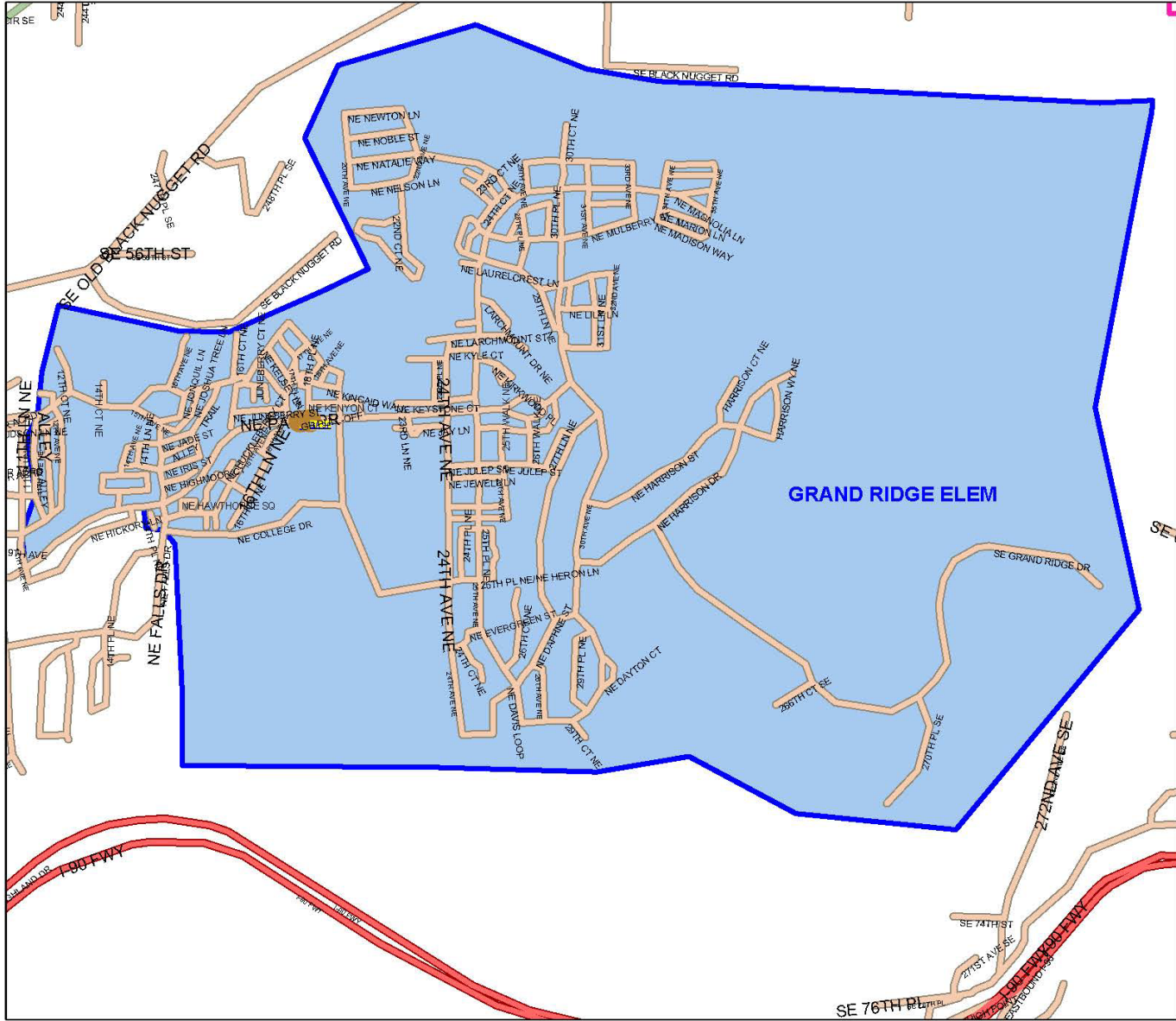
125 Kindergarten students are transported to Challenger and Endeavour Elementary Schools due to lack of classroom space. Grand Ridge has 10 portable classrooms

Issaquah School District 411  
District Map



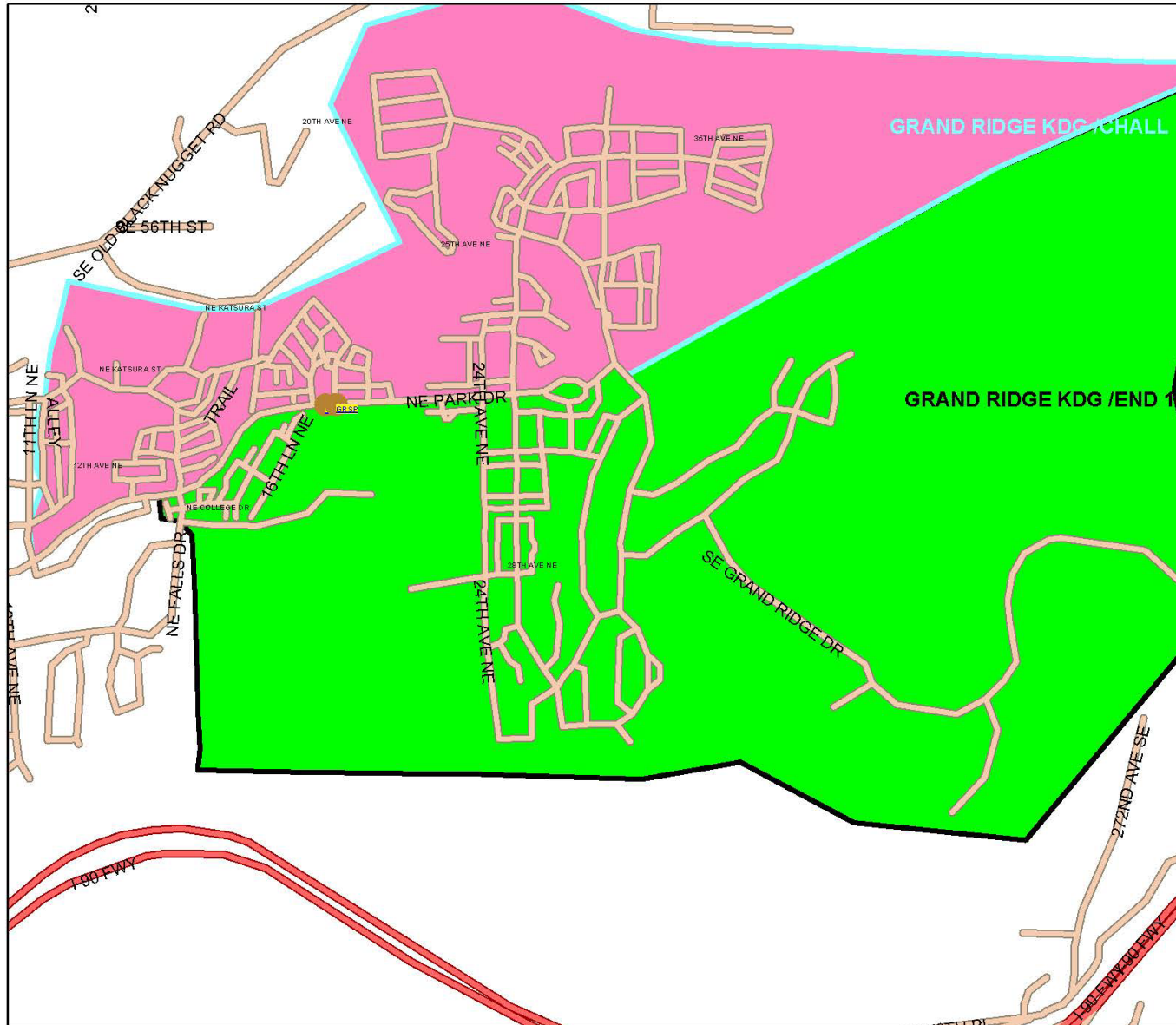
GRAND RIDGE / CLARK  
BOUNDARIES

## Issaquah School District 411 District Map



# GRAND RIDGE BOUNDARY

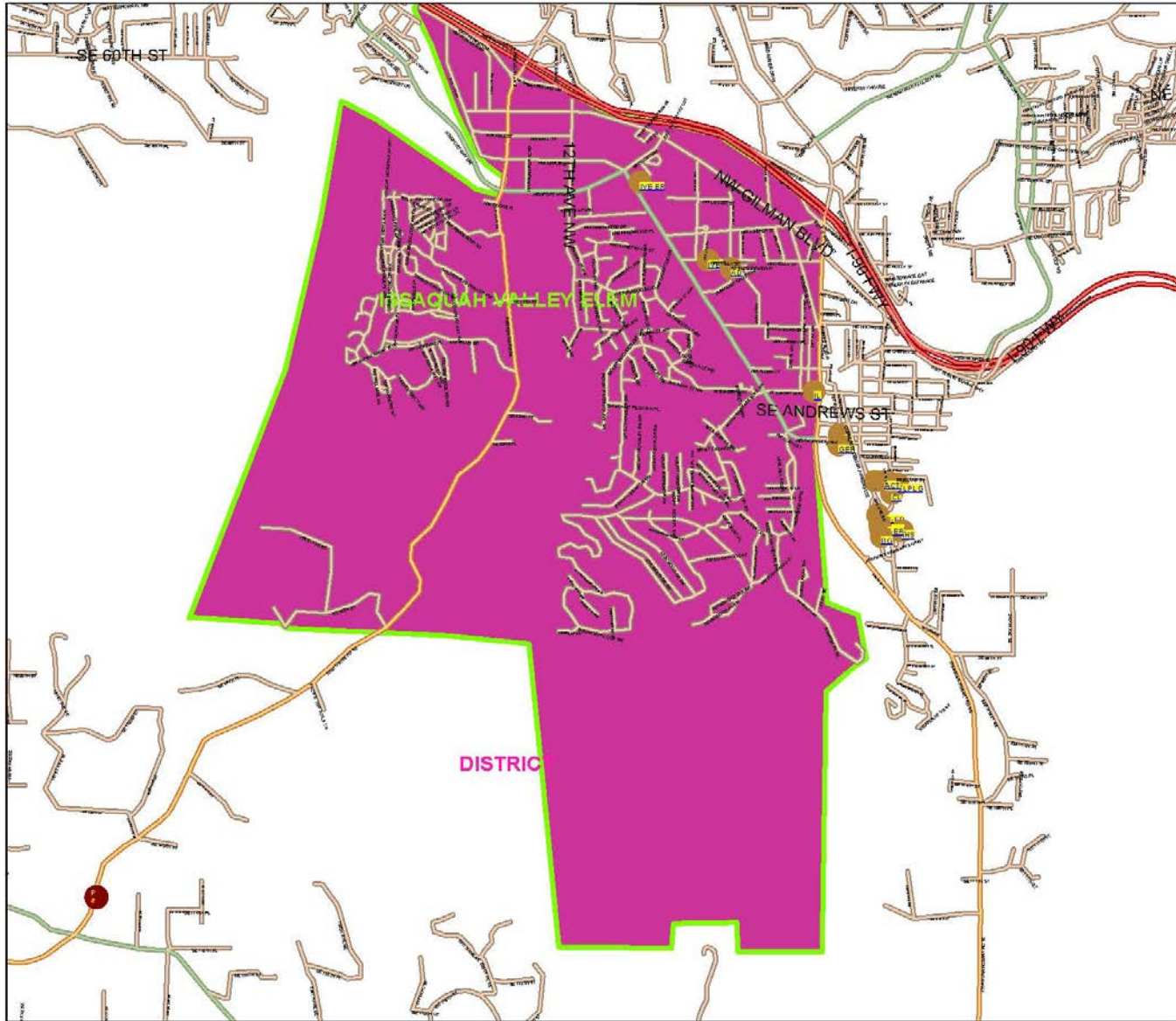
# Issaquah School District 411 District Map



GRAND RIDGE  
KINDERGARTEN  
SPLIT BOUNDARY



Issaquah School District 411  
District Map



# ISSAQUAH VALLEY ELEMENTARY BOUNDARY

# 2016/2017 Highlands Area Students

---

- 80 Grand Ridge Kindergarten students are transported to Challenger Elementary in Klahanie
- 45 Grand Ridge Kindergarten students are transported to Endeavour Elementary off of Duthie Hill Road
- 337 Highlands Elementary students are transported to Clark Elementary
- 173 Elementary students in the Black Nugget/Overdale area are transported to Clark Elementary

---

510      Students are transported to Clark Elementary

635      Students are transported out of the area



# Using trip generation numbers per student from the final Clark Traffic Study

---

Students transported to/from Clark Elementary generate:

AM Peak                      82

Afternoon Peak            173

PM Peak                      107

Daily Total                362 Trips each day

---

Reducing enrollment at Clark Elementary is critical to accommodate Core Area growth at Issaquah Valley and Clark Elementary Schools.

## Grand Ridge Elementary is on a 10 acre site

---

- Going to an urban school plan, 3-story building with a compacted footprint, reduced surface parking and smaller play areas allows reducing the proposed footprint to about 7 acres.
- OSPI recommends 10 acres for an elementary school site.



# SITE PLAN – PROPOSED ELEMENTARY SCHOOL

- 
- Existing trees will remain outside the footprint area and will screen the building from south and westerly views.
  - The School will be compatible with existing Highlands residential and commercial development.



---

A neighborhood school serves the local community, reduces transportation and enhances sustainability goals.

---

If the proposed site is determined to be inappropriate for an elementary school, please suggest a more appropriate alternative.