

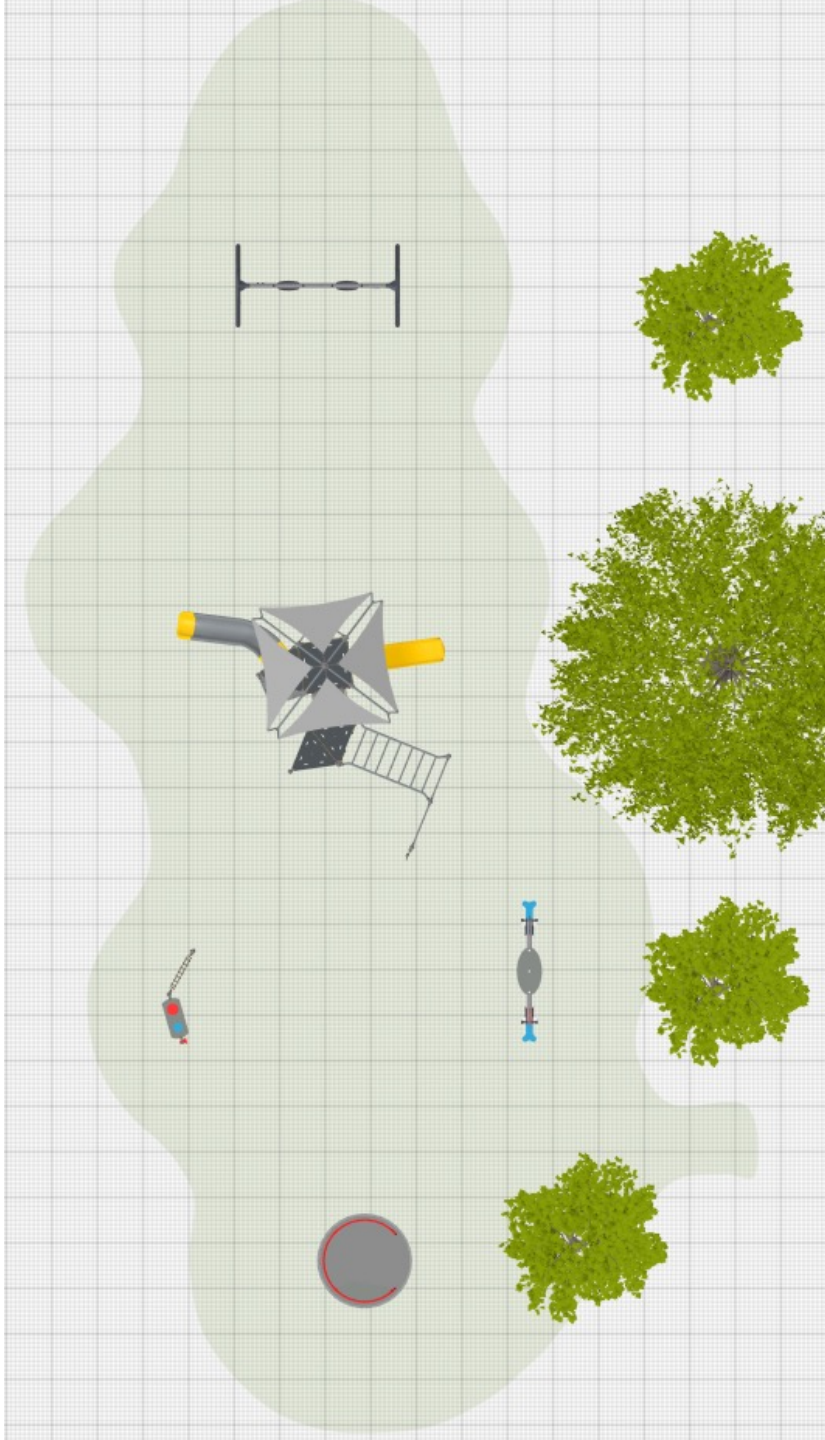
Kirk Park Issaquah Highlands

KOMPAN Play Equipment

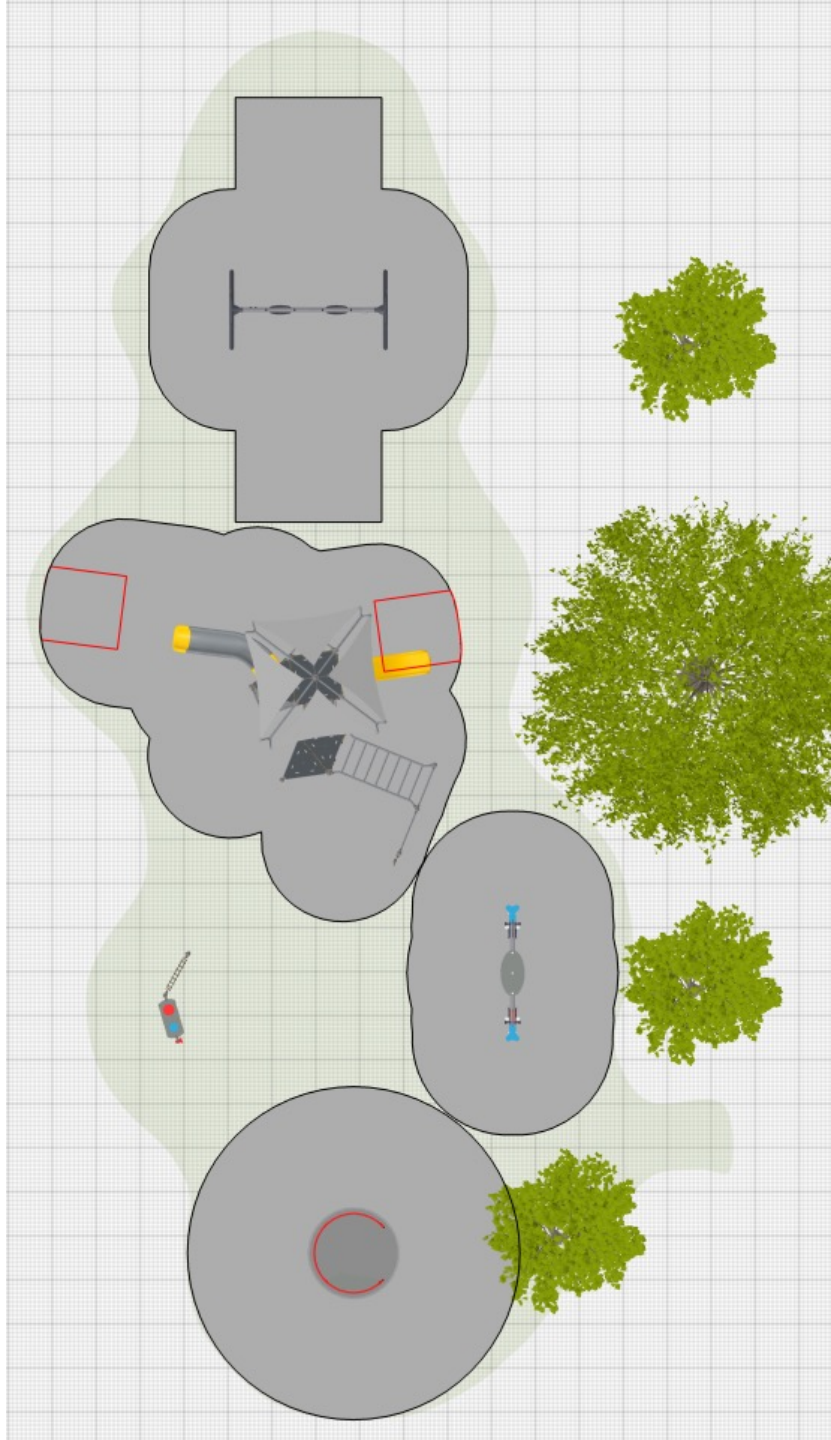
By Highwire, Inc.

Existing Site





Conceptual 2D plan



Conceptual 2D plan
with fall zones







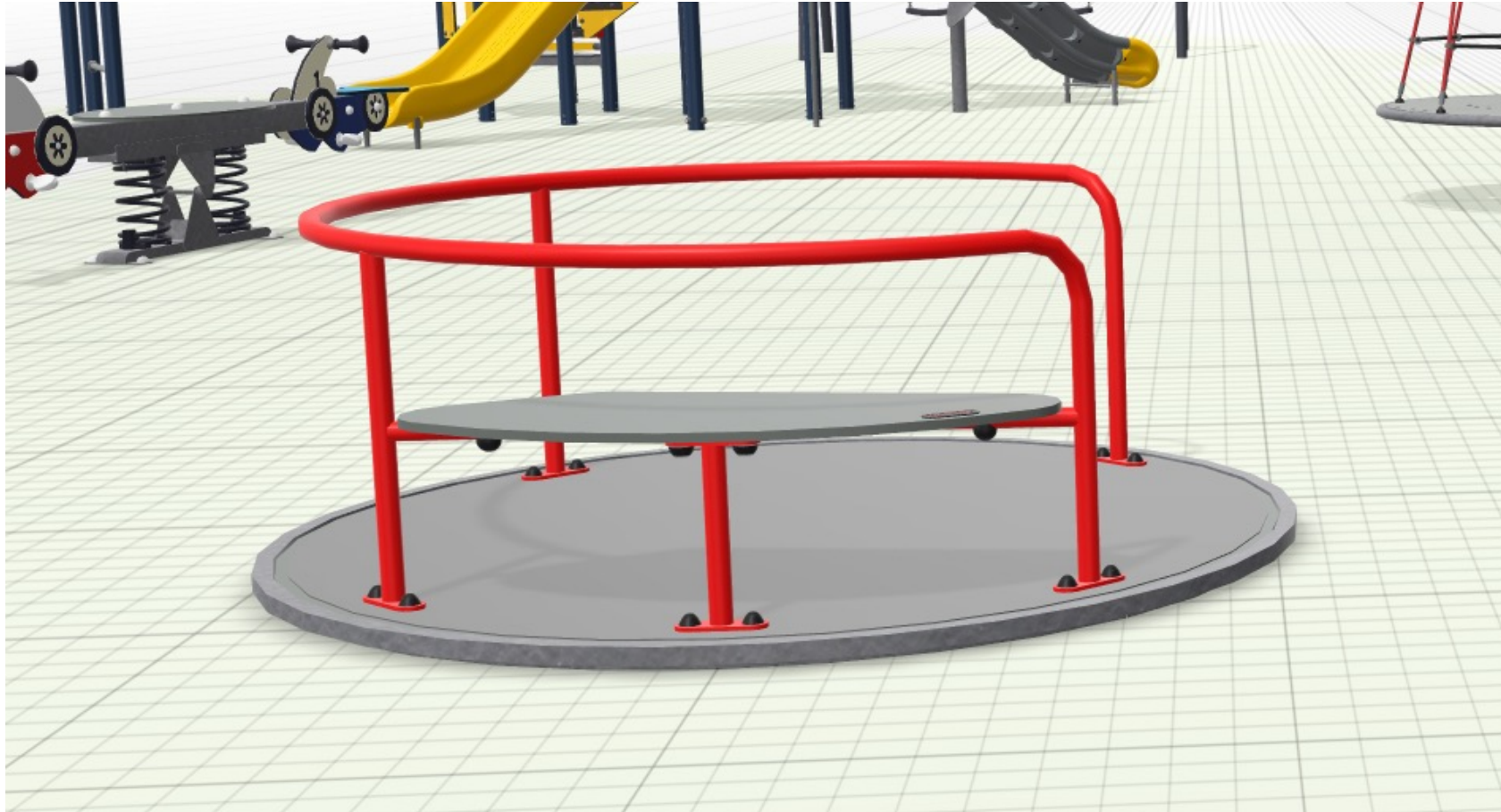




Trivor with Shade

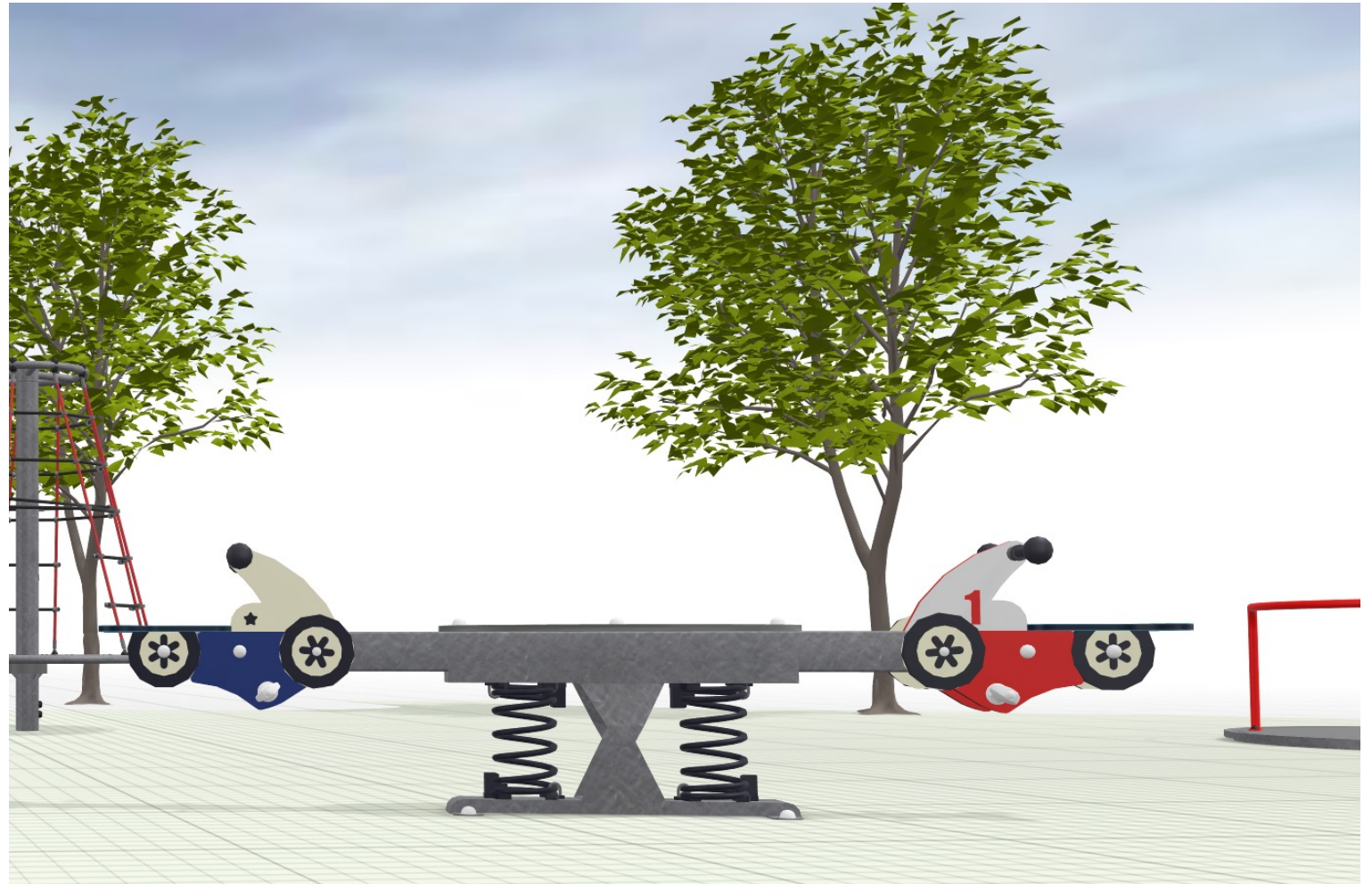
Music Panel - Classic





Universal Carousel

Motorcycle Seesaw



Equipment List & Pricing

Product	Mounting Code	Standard	Unit Price (USD)
 <p>PCM157-0202 UNIVERSAL CAROUSEL- RED ALUMINUM DECK PLATE, IN-GROUND 20CM</p>	INGROUND		19,960.00
 <p>M18301-12P Motorcycle Seesaw In- ground 60cm</p>	INGROUND		4,490.00
 <p>PCE111533-0903 TRIVIOR WITH SHADING BLOSSOM - IN-GROUND</p>	INGROUND		40,860.00
 <p>PCM003121-0901 PLAY PANEL 2 - MUSIC CLASSIC, IN-GROUND 90CM</p>	INGROUND		7,740.00

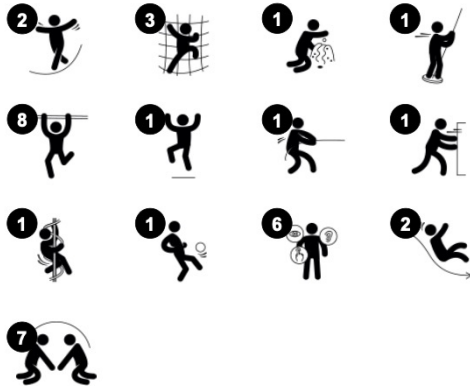
Trivor with Shading



PCE111533



Item no. PCE111533-0901	
General Product Information	
Dimensions LxWxH	18'11"x19'12"x17'5"
Age group	5 - 12
Play capacity (users)	15
Color options	



The Trivor will inspire school children with the fun, varied play opportunities: Climbing, sliding, gliding, spinning, and hanging will attract children again and again. The richness of activities supports the development of physical and social-emotional skills in school agers. The slides and the Fireman's Pole help children take turns and negotiate, supporting social-

emotional development. The dare-devil fireman's pole is truly thrilling and also supports the child's spatial awareness. The looping between slides and stairs also trains the children's condition. The Monkey Bars are strengthen the upper body while also functioning as a point for retraction and meetings. The Somersault bars add a fun

meeting point. The rotating movement also supports the proprioception, which is important for self-reliance.

Motorcycle Seesaw

M183



Handhold

Physical: the possibility to hold onto more areas of the handhold ensures a good grip, necessary for rocking intensely. This trains hand and arm muscles.



Foot support

Physical: the possibility of footrest supports intense rocking. Rocking stimulates the senses of balance and space that are fundamental in managing the world securely.



Center platform

Physical: supports agility, balance and coordination when standing, using leg and core muscles, building bone density when jumping. Facilitates sitting and lying also, allowing for users with disabilities.

Social-emotional: provides an inclusive space. Point for gathering and for caregivers assisting. Teamwork and socializing when rocking together.



Theme

Cognitive: suggests a theme and supports dramatic play, which stimulates languages and communication skills.



Rocking together

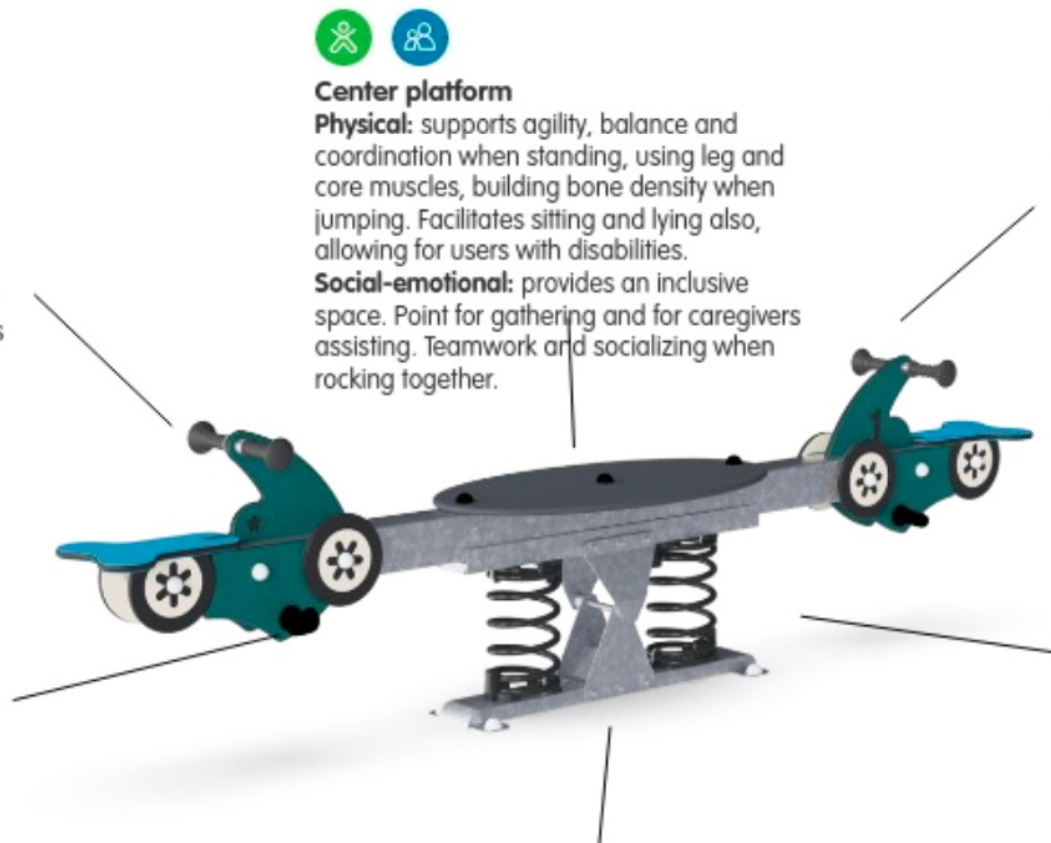
Social-emotional: the possibility of rocking together develops cooperation skills and consideration of others when rocking.



Rocking spring

Physical: response to movement increases spatial awareness and sense of balance. These are fundamental motor skills that help the child's ability to sit still on a chair which takes a good sense of balance.

Cognitive: trains the understanding of cause and effect: when I move my body, the spring responds with movement.



Universal Carousel

PCM157



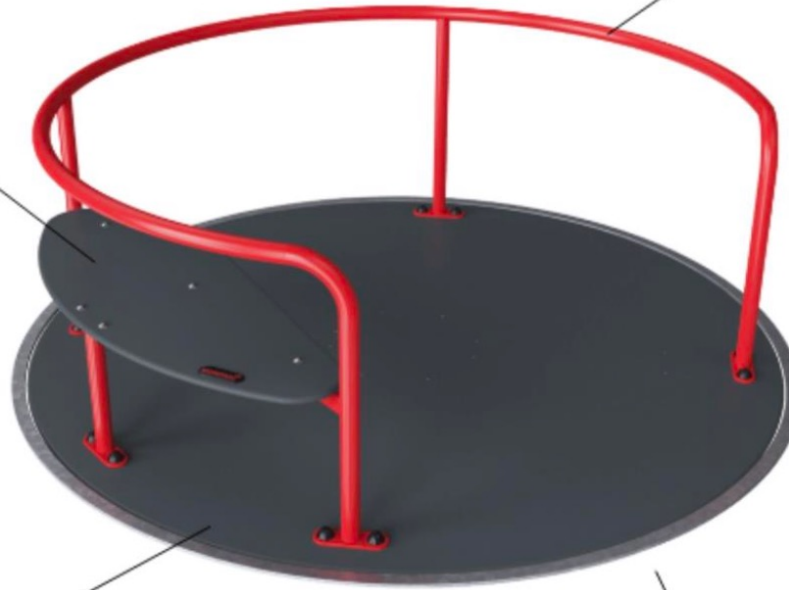
Bench

Social-emotional: a secure resting point for less confident or physically agile users. Great point for adult users or assistants.



Open space

Social-emotional: room for many users, with or without assistive devices, to spin and play together. Training of cooperation and empathy.



Handrails and side poles

Physical: pushing or pulling the carousel strengthens arm and leg muscles.

Social-emotional: pushing and pulling others facilitates cooperation and empathy: when to stop, how to take turns etc.



Rotation

Physical: pushing or pulling into motion, children use their muscle strength and exercise their cardio. The rotation increases a sense of balance and space when enjoying the ride.

Social-emotional: listening and negotiating how slow or fast to go, children develop their empathy and cooperation skills.



Wide open entrance

Physical: enough space for securely jumping on and off while spinning, training agility, balance and coordination, as well as building bone density.

Social-emotional: allows space for assistive devices and wheelchairs.

Play Panel 2 - Music, Classic

PCM003121



Music tubes

Social-emotional: invite social interaction and co-creation for more children, on both sides.

Cognitive: understanding of cause and effect when striking tubes.

Creative: the creation of different intensity and tonality stimulates creative skills.



Rubber flaps

Social-emotional: the two rows of flaps invite cooperation and co-creation.

Cognitive: cause and effect understanding when discovering sound from flaps hitting tubes.



Megaphone

Social-emotional: inspires communication and turn-taking skills.

Cognitive: distortion of sound evokes curiosity and stimulates an understanding of cause and effect.



Two sides

Social-emotional: invites cooperation and communication. The low height and the transparency of the panel makes interaction possible between the two sides.



Tonality

Cognitive: creative thinking when combining tones into tunes.

Creative: composing new tonal combinations stimulates creativity.



Drums

Social-emotional: cooperation and co-creation, parallel and group play.

Cognitive: cause and effect understanding when creating sounds, supporting a sense of rhythm, that is essential for pre-reading skills.

Creative: creating and leaving a mark with sound.

